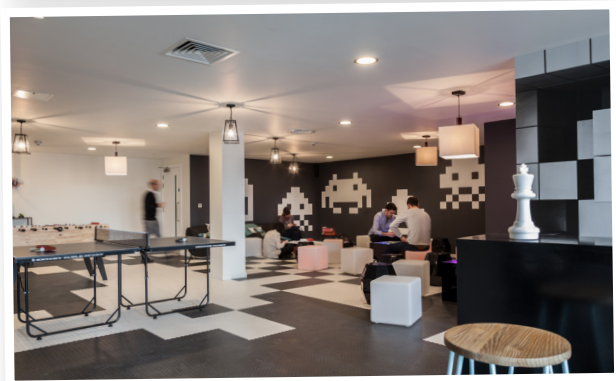
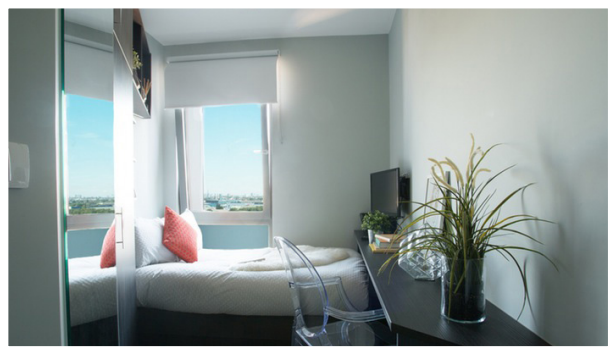




STAFFORD HOUSE LONDON

STUDENT RESIDENCE – THE COLLECTIVE OLD OAK



New this summer is the fantastic Collective Old Oak residence in London. The world's largest co-living space the Collective Old Oak is packed with modern facilities such as a cinema, games room, gym, sauna and rooftop terrace gardens. Transport links to the school are good with a direct service on the Central line from North Acton Station taking you to within a short walk of the school. Each En-suite room features a desk, wardrobe, flat screen monitor and a bathroom with walk-in shower. En-suite rooms share a kitchenette and breakfast bar and there is super-fast broadband throughout. The Collective Old Oak has a range of well-appointed communal areas, with shared common rooms, games room, gym and library. With Wembley Stadium and Westfield Shopping Centre nearby and direct links to the heart of London, this modern accommodation provides everything a student might need when studying in London.

ROOMS

Single

EN-SUITE

Yes

SELF-CATERED

Yes

BEDDING

Bedding Pack provided

LAUNDRY FACILITIES

On-site

INTERNET CONNECTION

Yes - WiFi

OTHER FACILITIES

Common room, cinema, games room, library, gym, restaurant, rooftop garden

SECURITY

24 hour reception

LOCATION

Zone 2

DISTANCE FROM SCHOOL

35 minutes bus/tube

NEAREST TUBE STATION

North Acton: 3 mins by bus (266)

THE COLLECTIVE OLD OAK

