

THE LONDON SCHOOL OF ECONOMICS

LONDON BANKSIDE

Address:

Bankside House, 24 Sumner Street, London, SE1 9JA



Situated opposite the world-famous Tate Modern and very close to the iconic Shakespeare Globe Theatre and London Eye, London Bankside is the ideal choice for those who want to be right in the heart of the UK's energetic and historical capital city. Many sights and attractions visited on the London Explorer Programme are within easy walking distance or a short tube ride away, using the

weekly London Travelcard which is included in the course.

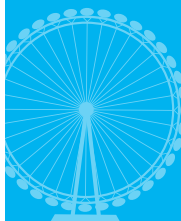
Bankside House is the largest residence of the London School of Economics and features accommodation, classrooms, dining room and social spaces all on one site. It is surrounded by a variety of shops, interesting restaurants and popular coffee shops.

FACILITIES

Total Capacity	200	Max. ratio of showers/toilets to beds	1:4*
Ensuite	✓ *	Kitchen for Group Leader use	✗
Standard	✗ *	Laundry - service wash	✗
Single	✗ *	Laundry - coin operated, self-service	✓
Twin	✓	WiFi access	✓
Multi-bed	✓	Drink making facilities	✓ **
Television Lounge	✓	Vending machines	✓
Common room	✓	Swimming pool	✗
Computer Room	✗	Coeliac / Special diets on request ***	✓
Towels provided	✓	Halal food on request ***	✓

* Group leaders will be in standard single rooms with a shared bathroom 1:2
** In Group Leaders rooms only *** Must be book at least 2 months in advance


STAFFORD HOUSE
Summer



LONDON EXPLORER PROGRAMME

RESIDENTIAL ONLY

AGES 12-17 (GROUPS ONLY)



SCAN WITH ZAPPAR TO SEE MORE!

**Public transport information:**

- **Nearest airports:** London City 13km, Heathrow 30km, Gatwick 47km, Stansted 58km
- **St Pancras International Station:** 3km (20 min by train)
- **Nearest mainline Train Station:** Cannon Street, Waterloo or Blackfriars
- **Nearest Underground Station:** Southwark (10 min walk from school)

Local Amenities

- **Nearest ATM:** Sainsbury's, Great Suffolk St, SE1 oUH
- **Money Exchange:** ICE, 22 Waterloo Station, SE1 8SW
- **Doctor / Health Centre:** 2 Princess St, SE1 6JP, Tel: 020 7928 0253
- **Hospital (A&E):** St Thomas's Hospital, SE1 7EH, Tel: 020 7188 7188
- **Pharmacy:** Osbon 9 Upper Ground, SE1 9LP
- **Muslim prayer rooms:** KCL, 18-20 Newcomen St, SE1 1UL
- **Convenience store:** Co-op Food, 3 Sumner St, SE1 9RE
- **Restaurants / Cafes:**
 - » Leon, 7 Canvey St, SE1 9AN (Mediterranean)
 - » Tortilla, 106 Southwark St, SE1 oTA (Mexican)
 - » Wagamama, 20 Sumner St, SE1 9JZ (Asian)
 - » Tibits, 132 Southwark St, SE1 oSW (Vegetarian)
 - » Carluccio's, 52 Holland St, SE1 9FU (Italian)
 - » Black Sheep Coffee, 81 Southwark St, SE1 oHX (Coffee)
 - » Costa Coffee, 18 Great Suffolk St, SE1 oUG (Coffee & snacks)
 - » Starbucks Coffee, 223-227 Borough High St, SE1 1JD (Coffee & Snacks)

**CENTRE EMERGENCY NUMBER**

TBC

CENTRE DIRECTOR

TBC

CENTRE OFFICE NUMBER

TBC

**STAFFORD HOUSE HEAD OFFICE
EMERGENCY NUMBER (24 HOURS)**

0044 (0) 7889 895 200

SAMPLE PROGRAMME

	Morning	Afternoon	Evening
Sunday	Arrival and Local Orientation		Welcome Evening & Ice breaker activities
Monday	English Lessons	Sightseeing Visit: Westminster area	Group Leader-Led Activities
Tuesday	English Lessons	Sightseeing Visit: The British Museum	British Culture Evening
Wednesday	English Lessons	Sightseeing Visit: The West End, Piccadilly Circus & Leicester Square	Group Leader-Led Activities
Thursday	English Lessons	Sightseeing Visit: London Science Museum	Disco
Friday	English Lessons	Sightseeing Visit: Oxford Street & Regent Street	Group Leader-Led Activities
Saturday	Included Full Day Excursion: Oxford, Walking Tour & Christ Church College		Chill-out Evening including Films, Popcorn & Board Games
Sunday	Group Leader-Led Activities, or Optional Full Day Excursion (at extra cost) e.g. Windsor, Walking Tour & Windsor Castle		Group Leader-Led Activities
Monday	Sightseeing Visit: Thames Walk, Tower of London & Tower Bridge (no entrance)	English Lessons	Group Leader-Led Activities
Tuesday	Sightseeing Visit: The London Natural History Museum	English Lessons	Quiz Night
Wednesday	Sightseeing Visit: Buckingham Palace & St James' Park (no entrance)	English Lessons	Group Leader-Led Activities
Thursday	Sightseeing Visit: Trafalgar Square & The National Gallery	English Lessons	Disco
Friday	Sightseeing Visit: Covent Garden	English Lessons	Group Leader-Led Activities
Saturday	Included Full Day Excursion: Brighton, Walking Tour & The Royal Pavilion		Chill-out Evening including Films, Popcorn & Board Games
Sunday	Departure		

PROGRAMME INCLUDES:
 **15** HOURS of English lessons per week
CERTIFICATE

Each student will receive an end-of-course certificate


5 SIGHTSEEING VISITS per week


Includes cultural and historical walking tours, shopping areas and visits to world famous museums and galleries.

 **3** EVENING ACTIVITIES per week

1 FULL DAY Excursion per week


Destinations may include Oxford, Brighton and Canterbury, with a walking tour and attraction entrance

 **TRAVELCARDS** Can be used on the underground and the buses in Zone 1-2