

**NAPIER UNIVERSITY**

# EDINBURGH

## Address:

Merchiston Campus, 10 Colinton Road, Edinburgh, EH10 5DT

## Accommodation address:

**Bainfield Residence**, 6 Bainfield Drive, Fountainbridge, Edinburgh, EH11 1AR



Edinburgh, Scotland's capital, is an ancient city with glorious views of the sea and hills, with endless medieval alleyways and Georgian streets to explore. You cannot miss the incredible Edinburgh Castle which overlooks the Old Town and the Royal Mile, leading to the equally impressive Holyrood Palace and Park where you can climb Arthur's Seat for a spectacular view of the city.

Despite being the capital, Edinburgh is a safe and compact city which still offers all the sights, history and culture of larger UK capitals. Napier University is located just away from the bustle of the Royal Mile, and provides students with excellent modern facilities, with plenty of cafés and restaurants close by.

## FACILITIES

Total Capacity	150	Max. ratio of showers/toilets to beds	1:1
Ensuite	✓	Kitchen for Group Leader use	✓
Standard	✗	Laundry - service wash	✗
Single	✓	Laundry - coin operated, self-service	✓
Twin	✗	WiFi access	✓
Multi-bed	✗	Drink making facilities	✓
Television Lounge	✗	Vending machines	✓
Common room	✓	Swimming pool	✗
Computer Room	✓	Coeliac / Special diets on request **	✓
Towels provided	✓	Halal food on request **	✓

**\*\* Must be booked at least two months before arrival**

  
**STAFFORD HOUSE**  
*Summer*



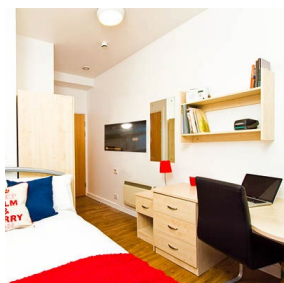
**EDINBURGH EXPLORER PROGRAMME**

**RESIDENTIAL ONLY**

**AGES 10-17 (GROUPS ONLY)**



**SCAN WITH ZAPPAR TO SEE MORE!**

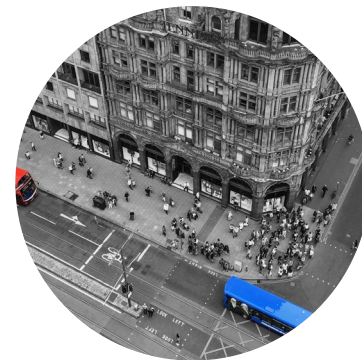


## Public transport information:

- **Nearest airport:** Edinburgh International Airport 20km, Glasgow Airport 95km
- **Nearest rail station:** Edinburgh Waverley 2.5km (30 min walk)
- 15 minutes from accommodation to City Centre by bus
- 15 minutes from accommodation to school on foot
- Bus Pass included

## Local Amenities:

- **Nearest ATM:** Sainsbury's Local, 81-85 Dundee St, EH11 1AW
- **Money Exchange:** Currency Exchange Bureau, 28 W Maitland St, EH12 5DX
- **Doctor/Health Centre:** Springwell Medical Centre, 29 Ardmillan Terrace, EH11 2JL
- **Hospital (A&E):** Western General Hospital, Crewe Rd, EH4 2XU
- **Pharmacy:** M&D Green-Fountainbridge, 179 Dundee St, EH11 1BY
- **Convenience store:** Sainsbury's Local, 81-85 Dundee St, EH11 1AW
- **Restaurants/Cafes:**
  - » Pizza Hut, Fountain Park, EH11 1AF (Italian)
  - » Nandos, Dundee St, EH11 1AF (Afro-Portuguese)
  - » Chiquito, Fountain Park, EH11 1AT (Tex-Mex)
  - » Hanmi, 167-171 Dundee St, EH11 1BY (Korean)
  - » Starbucks, Fountain Park, EH11 1AF (coffee and snacks)
  - » The Saltyard, 158 Dalry Rd, EH11 2HB (coffee and snacks)



## CENTRE EMERGENCY NUMBER

TBC

## CENTRE DIRECTOR

TBC

## CENTRE OFFICE NUMBER

TBC

## STAFFORD HOUSE HEAD OFFICE EMERGENCY NUMBER (24 HOURS)

0044 (0) 7889 895 200

## SAMPLE PROGRAMME

	Morning	Afternoon	Evening
<b>Sunday</b>	Arrival, Induction & Campus Tour		Welcome Evening & Ice Breaker Activities
<b>Monday</b>	English Lessons	Sightseeing Visit: The Royal Mile & Entry to Edinburgh Castle	Ceilidh (Traditional Scottish Dancing)
<b>Tuesday</b>	English Lessons	Sightseeing Tour: The Scottish Parliament, Holyrood Park & Climb to Arthur's Seat	Casino Night or Drama Workshop
<b>Wednesday</b>	English Lessons	Sports or Arts & Crafts e.g. Jewellery Making	Group Leader-Led Activities
<b>Thursday</b>	English Lessons	Sightseeing Tour: The Water of Leith, Dean Village & National Gallery of Modern Art	International Night
<b>Friday</b>	English Lessons	Sightseeing Visit: Harry Potter in Edinburgh	Beach Party Disco or English Conversation Club
<b>Saturday</b>	Included Full Day Excursion: Glasgow, Walking Tour & Glasgow Science Centre		Chill Out Evening including Films, Popcorn & Board Games
<b>Sunday</b>	Sightseeing in Edinburgh, or Optional Full Day Excursion (at extra cost) e.g. Loch Ness & Boat Cruise		British Culture Evening
<b>Monday</b>	Sightseeing Tour: The University of Edinburgh	English Lessons	Ceilidh (Traditional Scottish Dancing)
<b>Tuesday</b>	Sightseeing Tour: Edinburgh Old Town & National Museum of Scotland	English Lessons	Ghost Walk
<b>Wednesday</b>	Sports or Drama Workshop	English Lessons	Group Leader-Led Activities
<b>Thursday</b>	Sightseeing Tour: Calton Hill & National Monument	English Lessons	"Edinburgh's Got Talent!" Talent Show
<b>Friday</b>	Sightseeing Tour: Princes Street Gardens & the Scottish National Gallery	English Lessons	Masked Ball Disco or English Conversation Club
<b>Saturday</b>	Included Full Day Excursion: Loch Lomond, Boat Cruise & Shopping in Stirling		Chill Out Evening including Films, Popcorn & Board Games
<b>Sunday</b>	Departure		

## PROGRAMME INCLUDES:

**15 HOURS** of English lessons per week

### CERTIFICATE

Each student will receive an end-of-course certificate



**4 SIGHTSEEING VISITS** per week



Includes cultural and historical walking tours, shopping areas and visits to world famous museums and galleries.

**6 EVENING ACTIVITIES** per week



**1 FULL DAY** Excursion per week



Destinations may include Glasgow and Loch Lomond



### BUS PASS

Weekly bus passes included for use across the city