

## MALVERN ST JAMES

# MALVERN

### Address:

Malvern St James, 15 Avenue Road, Great Malvern  
Worcestershire, WR14 3BA



Great Malvern, situated at the foot of the stunning Malvern Hills is a designated 'Area of Outstanding Natural Beauty'. The town provides a safe and scenic environment for learning English and experiencing British culture. Malvern is a Victorian Spa town, famous for its natural mineral water springs and has attracted tourists since the 19th century. It is close to Worcester, Cheltenham and Stratford-Upon-Avon, the birthplace of William Shakespeare.

Malvern St James, a former hotel, is now a prestigious and traditional UK boarding school. It has plenty of facilities for you to enjoy, including a swimming pool, art studios, a sports centre, as well as lots of outdoor space. The accommodation and dining rooms are close together and the food served is varied and of high quality.

## ACCOMMODATION / FACILITIES

Total Capacity Residential	330	Max. ratio of showers/toilets to beds	1:6
Ensuite	✗	Kitchen for Group Leader use	✓
Standard	✓	Laundry - service wash	✗
Single	✓	Laundry - free self-service	✓
Twin	✓	WiFi access	✓
Multi-bed	✓	Drink making facilities	✓
Television Lounge	✓	Vending machines	✗
Common room	✓	Swimming pool	✓
Computer Room	✓	Coeliac / Special diets on request **	✓
Towels provided	✓	Halal food on request **	✓

\*\* Must be booked at least two months before arrival

  
STAFFORD HOUSE  
Summer



CLASSIC COURSE

CLASSIC PLUS DRAMA

CLASSIC PLUS HORSE RIDING

CLASSIC PLUS TENNIS

CLASSIC PLUS ART

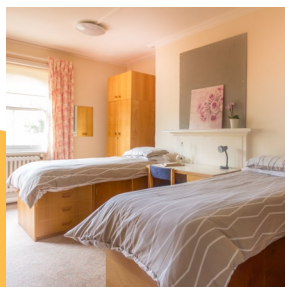
RESIDENTIAL ONLY

AGES 8-17 (GROUPS)

AGES 12-17 (INDIVIDUALS)



SCAN WITH ZAPPAR TO SEE MORE!



## Public transport information:

- **Nearest airport:** Birmingham International 72km, Bristol 115km, Cardiff 133km, Heathrow 195km
- **Nearest rail station:** Great Malvern
- Train station is directly opposite the school – with direct trains to London
- Easy walking distance from school to town centre

## Local Amenities:

- **Nearest ATM:** 114 Barnard's Green Rd, WR14 3ND
- **Money Exchange:** TUI Holiday Store, 73-77 Church St, WR14 2AE
- **Doctor/Health Centre:** New Court Surgery, 300 Pickersleigh Rd, WR14 2GP
- **Hospital (A&E):** Worcestershire Acute Hospitals, Newton Rd, WR5 1DD
- **Pharmacy:** Lloyd's Pharmacy, 93-95 Barnard's Green Rd, WR14 3LU
- **Convenience store:** Co-Op, 86-88 Barnard's Green Rd, WR14 3LY
- **Restaurants/Cafes:**
  - » Peppe's, 5 Church St, WR14 2XH (Italian)
  - » Ask, 6/8 Bellevue Terrace, WR14 4PZ (Italian)
  - » The Thai Connection, WR14 4QU (Thai)
  - » Barnards Green Fish Bar, 24 Barnard's Green Rd, WR14 3LY (Fish and Chips)
  - » The Crusty Cob, 4B Graham Rd, WR14 2HN (Sandwich Shop)
  - » St Ann's Well Café, St Ann's Rd, WR14 4RF (Coffee, cakes and snacks)
  - » Costa, 101a Church St, WR14 2AE (Coffee and snacks)
  - » Belle Vue Coffee Lounge, 32 Bellevue Terrace, WR14 4PZ



## CENTRE EMERGENCY NUMBER

TBC

## CENTRE DIRECTOR

TBC

## CENTRE OFFICE NUMBER

TBC

## STAFFORD HOUSE HEAD OFFICE EMERGENCY NUMBER (24 HOURS)

0044 (0) 7889 895 200

## SAMPLE PROGRAMMES

	Morning	Afternoon	Evening
<b>Sunday</b>	Arrival, Induction & Campus Tour		Welcome Evening & Ice Breaker Activities
<b>Monday</b>	Placement Test & Induction Lesson	Walking Tour of Malvern Town & Malvern Hills	Welcome Disco or Drama based Games
<b>Tuesday</b>	English Lessons	Included Half Day Excursion: Cheltenham Walking Tour (no entrance included)	"Who wants to be a Millionaire?" Quiz Night
<b>Wednesday</b>	English Lessons	Football, Tennis or Arts & Crafts e.g. Jewellery Making	International Night
<b>Thursday</b>	English Lessons	Included Half Day Excursion: Stratford-upon-Avon, Walking Tour & Shakespeare's Birthplace	Casino Night or English Conversation Club
<b>Friday</b>	English Lessons	"Mini Olympics" Competition or Drama Workshop	Beach Party Disco or Sports
<b>Saturday</b>	Included Full Day Excursion: London & Walking Tour (with late return)		Chill Out Evening including Films, Popcorn & Board Games
<b>Sunday</b>	Onsite Activities e.g. British Sports Day, or Sightseeing in Malvern, or Optional Full Day Excursion (at extra cost) e.g. Bath, Walking Tour & The Roman Baths		British Culture Night
<b>Monday</b>	Local Visit: Great Malvern Priory (church) or Malvern Museum of Local History	Lessons	Fancy Dress Disco or Arts & Crafts e.g. Graffiti Design
<b>Tuesday</b>	Included Half Day Excursion: Worcester Walking Tour (no entrance included)	Lessons	Game Show Night
<b>Wednesday</b>	Rugby, Basketball or Talent Show Preparation	Lessons	"Malvern's Got Talent!" Talent Show
<b>Thursday</b>	Included Half Day Excursion: Birmingham & The Bullring Shopping Centre	Lessons	Murder Mystery Activity
<b>Friday</b>	"Tribal Wars" Competition or Arts & Crafts e.g. Mask Making	Lessons	Masked Ball Disco or Sports
<b>Saturday</b>	Included Full Day Excursion: Oxford, Walking Tour & Christ Church College		Chill Out Evening including Films, Popcorn & Board Games
<b>Sunday</b>	Departure		

## PROGRAMME INCLUDES:

**15** HOURS of English lessons per week

### CERTIFICATE

Each student will receive an end-of-course certificate



**2** HALF DAY EXCURSIONS per week



Can include Cheltenham, Stratford-upon-Avon, Worcester or Birmingham

**7** EVENING ACTIVITIES per week

**1** FULL DAY Excursion per week



Destinations may include London, Oxford or Cardiff, with a walking tour and attraction entrance