



• CAMBRIDGE • CANTERBURY • LONDON •



ADVENTURES IN ENGLISH

YEAR ROUND GROUPS 2023

WWW.STUDYHOLIDAYS.COM

YEAR ROUND COURSES FOR GROUPS

Where will you choose?



Welcome to Study Holidays! I am delighted to present our 2023 year round brochure which gives details of all of our year round courses and locations. With a busy 2022 almost over it has been a wonderful experience getting back to what we do best, running a comprehensive and feature-packed range of courses that focus on our cornerstone values of excellent teaching, exciting activities, great facilities and a family atmosphere. We have been able to provide hundreds of new 'Adventures in English' this year and can't wait to deliver many more!

All you have come to expect and for which we have an excellent reputation - customer service, dedicated teachers and student satisfaction - is central to the Study Holidays approach and we continue to evolve our course offering to suit all tastes.

Ruth Fenton, Director

| | |
|--------------------------------|----|
| JOIN THE STAFFORD HOUSE FAMILY | 4 |
| YOUR STUDY HOLIDAY | 6 |
| YEAR ROUND COURSE OPTIONS | 8 |
| CAMBRIDGE | 10 |
| CANTERBURY | 14 |
| LONDON | 18 |
| VIRTUAL LESSONS YEAR ROUND | 22 |



Accredited by the
BRITISH COUNCIL
for the teaching
of English in the UK



JOIN THE STAFFORD HOUSE FAMILY!



HERE AT STAFFORD HOUSE STUDY HOLIDAYS WE ARE ALL ABOUT THE STUDENT EXPERIENCE. OUR STAFF CREATE AN ENVIRONMENT OF HAPPY AND HEALTHY EXPERIENCES WITH A DEDICATION TO DELIVERING THE SAFEST AND MOST POSITIVE YEAR ROUND JUNIOR PROGRAMMES.

EXPERIENCE THE WORLD

We have 3 great year round locations situated across the UK for groups. At Stafford House Study Holidays there is something for everyone!

A FUN, HOLISTIC APPROACH

Whether you choose a small town or big city location you will be fully immersed in an English-speaking environment, and be able to explore the things that you are most passionate about. Our junior programmes provide daily English lessons as well as daily activities. Our excursions will give you the opportunity to go on historical adventures, marvel at famous landmarks and savour the excitement at incredible theme parks.

BECOME IMMERSSED

With our social programme you can take part in dozens of exciting activities! Join in with a "Dragon's Den" style presentation, an international party or maybe enter into one of our centre's talent shows. Each activity is an opportunity to meet with students hailing from over 50 countries around the world and a chance get to know their cultures and customs and

make lifelong friendships along the way.

COMFORTABLE, SAFE ENVIRONMENT

A comfortable and creative environment helps you achieve your potential, and we choose the best centres to host our summer and year round programmes. We also take our food very seriously, ensuring all students have 3 healthy meals a day, including a hot lunch (packed lunches are also provided on excursions). A healthy and well fed student is one brimming with lots of positive energy and ability to learn more productively.

HEALTHY LEARNING

By ensuring we incorporate plenty of sports and physical activity into your daily routine, we provide the opportunity to spend a lot of time outdoors enjoying nature, with various activities like basketball, tennis and even sailing in some of our centres! We also offer the opportunity for creative expression through our artistically inspired learning. schools we ensure that students are treated equally and with respect, and in return treat others with the same approach.



COMMUNITY

Our diverse nationality mix helps create an international community based on friendship and achievement. We know you will have an experience of a lifetime with the programme you choose, making Stafford House your home away from home for the summer or throughout the year!

BECOME A PART OF OUR PRIDE!

OUR STAFF CREATE AN ENVIRONMENT OF HAPPY AND HEALTHY EXPERIENCES WITH A DEDICATION TO DELIVERING THE SAFEST AND MOST POSITIVE YEAR ROUND JUNIOR PROGRAMMES.

PROGRESSIVE OUTLOOK

Stafford House Study Holidays is open and inclusive to everyone and in all our schools we ensure that students are treated equally and with respect, and in return treat others with the same approach.

DANCE INTO THE EVENING

We take our dancing very seriously at Stafford House Study Holidays and as such host various discos throughout each programme. Our disco evenings are a fun way for everyone to showcase their moves on the dance floor and simply let go! Dancing offers a wonderful opportunity for students to celebrate their hard work and achievements throughout the week. Everyone from our staff to the students is expected to put on their dancing shoes and go for it!



Make lifelong friends at Study Holidays!

YOUR STUDY HOLIDAY

OUR AIM IS TO TAKE EXCEPTIONAL CARE OF EACH AND EVERY STUDENT STAYING WITH US. OUR CENTRES AND LOCATIONS HAVE ALL BEEN SELECTED FOR THEIR SAFE AND SECURE ENVIRONMENTS, AND WE OFFER HIGH LEVELS OF SUPERVISION AT EACH.

STUDENT WELFARE

We understand that you trust us to take care of your students and we take our responsibility very seriously. For this reason, we have rules and procedures in place for all our young students to ensure their safety and well-being, which of course is our top priority. We are determined to provide the best possible experience for our students. From the moment they arrive and are

greeted at the arrivals hall, we are there to guide and support them every step of the way to the moment we wave them goodbye.

Our English Language courses in the UK are accredited by The British Council. We are also founder members of Young Learners English UK, a group who are dedicated to ensuring excellence in all aspects of junior courses, especially student welfare.

SECURITY

Our schools have always been a safe haven for students and we have highly developed contingency plans in place in the unlikely event of an emergency. Our staff are fully trained in these procedures so students can always feel they are in safe hands whilst in the care of Stafford House.

EVENING ACTIVITIES

Our activities provide the perfect opportunity for students to use the English they have learnt with their friends. Evening activities include discos, British culture night, talent shows and movie nights.



TEACHING

We employ dedicated professional teachers who are supported and guided by an experienced academic management team at Head Office.

Our syllabus and course materials are designed uniquely for our students, and aim to improve students' communicative competencies by building confidence and motivation.

Our aim is simple: to encourage students to use the language in realistic, cultural and fun situations. Each student will go home with a portfolio of their work along with tips and suggestions for further study.



Each student will go home with a portfolio of their work

A VARIETY OF GREAT EXCURSIONS & LOCAL VISITS

Our exclusive programme of excursions to historical, cultural and fun destinations is linked to motivating lessons that prepare students for visits to many of the UK's most famous cities. We use major excursion destinations such as London, Cambridge and Oxford as a "classroom" where students are exposed to a wealth of history and culture through guided walking tours, educational materials and visits to museums, colleges, cathedrals and other attractions. Our carefully planned tours enable our students to visit famous landmarks and learn about the history and culture of the city. Additional attractions and excursions can be booked in advance (at extra cost).



PROJECT WORK

Project work is a great way for students to make their own choices about what they learn, involving different skills and promoting creativity. Project work can cater for a wide range of learning styles and personalities and allows students to develop both their research and presentation skills. Projects are usually completed in small groups and can be presented in a variety of ways including: wall displays, blogs, short films, and magazine or newspaper articles.

YEAR ROUND COURSE OPTIONS

CANTERBURY | CAMBRIDGE | LONDON

For groups studying with us year round, we offer a wide range of choice which can be tailored to a group's specific needs. Exam preparation for both Cambridge suite and IELTS are available as well as CLIL lessons for academic subjects such as Geography or History. We not only welcome junior students but also teachers who are keen to develop both their methodology and language skills.



ENGLISH PLUS ACTIVITIES MINI STAYS / STAGES

AGE: 12+ years (varies by centre)

DURATION: 1 week plus

ENGLISH LESSONS: 15 hours per week

LOCATION: All UK centres

- 15 hours of English language lessons per week
- Maximum class size of 16
- 2 sports afternoons or 2 project afternoons per week (dependent on centre)
- 2 social evenings per week
- 1 full day and one half day excursion per week

EXAM PREPARATION (CAMBRIDGE SUITE AND IELTS)

DURATION: 1 week plus

ENGLISH LESSONS: 15 hours per week

LOCATION: All UK centres

- 20 hours of lessons per week
- Prepare for an internationally recognised qualification
- PET, KET, FCE and CAE preparation offered depending on the group's age and English level
- Academic or General IELTS available
- Option to take the exam as part of the course depending on dates (extra cost)
- Option to combine General English and exam preparation

PON/POR COURSE

DURATION: 1 week plus

ENGLISH LESSONS: 20 hours per week

LOCATION: All UK centres

- 20 hours of English lessons per week
- Opportunity to combine general English with exam preparation
- Maximum class size 18
- A wealth of experience in running successful PON/POR courses
- 2 social evenings per week
- 1 full day and one half day excursion per week

CLIL

DURATION: 1 week plus

ENGLISH LESSONS: 15 hours per week

LOCATION: All UK centres

- 15 hours of English lessons and 5 hours of CLIL subject lessons per week (additional CLIL lessons available on request at an extra cost)
- An excellent opportunity to study a subject and the English language at the same time
- A variety of subjects available - tailored to your group's needs
- Option to combine general English with a specific subject
- IGCSE preparation may be available upon request
- 2 social evenings per week
- 1 full day and one half day excursion per week

TEACHER TRAINING

AGE: 18+

DURATION: 1 week plus

ENGLISH LESSONS: 20 Hours per week

LOCATION: All UK centres

- Suitable for practising English language teachers who are keen to further develop their skills
- Kindergarten, primary and secondary focus available
- Modules based on lesson planning, technology, teaching productive and receptive skills and many more
- Options to combine general English with teaching methodology
- Opportunities to observe classes
- 20 hours of tuition with a maximum class size of 16

WORLD OF WORK

AGE: 14+

DURATION: 1-2 weeks

ENGLISH LESSONS: 15 Hours per week

LOCATION: All UK centres

MINIMUM LEVEL: Intermediate

- This course is ideal for those wanting to find out more about the working environment
- 15 hours of English Lessons per week plus 2 x 3 hour WOW workshops
- Groups can choose from a combination of general English and a number of specialist subjects including travel and tourism, green economy, marketing or journalism
- Our most popular workshops explore the job application process: CV writing and interviewing. Others focus on effective communication in the workplace and cover both presentation and written skills
- Our WOW visits provide an ideal complement to our workshops and give a real insight into the way a company works. Previous visits have included: Metro Bank, The Apple Store and Chelsea Football Club



Our 'World of Work' course allows students to find out more about the professional environment





We
CHOSE

CAMBRIDGE

UK 



ADDRESS: STAFFORD HOUSE INTERNATIONAL, 15 ROUND CHURCH ST, CAMBRIDGE CB5 8AD



Students can enjoy exploring the vast array of historic sights on offer in the City of Cambridge



-  **COURSES:**
ENGLISH & ACTIVITIES
ENGLISH & OPTIONAL ACTIVITIES
-  **ACCOMMODATION:**
HOMESTAY

OVERVIEW

Famous throughout the world due to its prestigious university, Cambridge attracts around 7 million tourists each year who come to see the numerous sights and monuments. There is a great deal to discover in Cambridge, from a punting boat trip on the River Cam, to a visit to one of the notable museums. The world famous Colleges of King's and Trinity are only a short walk away from the school. Cambridge is a safe a popular city for students of all ages.

THE SCHOOL

Stafford House Cambridge is in the heart of Cambridge city centre. Shops are a short walk away as well as plenty of places to eat and drink. The river Cam is just around the corner along with the lovely Jesus Green for outdoor space. The school has 9 classrooms and a large canteen with coffee bar for students to eat and relax in. Classrooms are bright with interactive white boards in each one. There is a student lounge and study area for students to socialise and practise their English.

Accredited by the
BRITISH COUNCIL
for the teaching
of English in the UK

MEMBER
ENGLISH UK



CAMBRIDGE, UK

CENTRE INFORMATION



AGES
14 Years +



GROUPS ONLY



HIGHLIGHT
Kings College



ACCOMMODATION
Homestay



15
HOURS
of English
lessons



2 **EVENING**
ACTIVITIES
per week



1 **FULL DAY**
Excursion
per week



BUS PASS
INCLUDED



2 **SIGHTSEEING**
VISITS
per week



1 **HALF DAY**
Excursion
per week

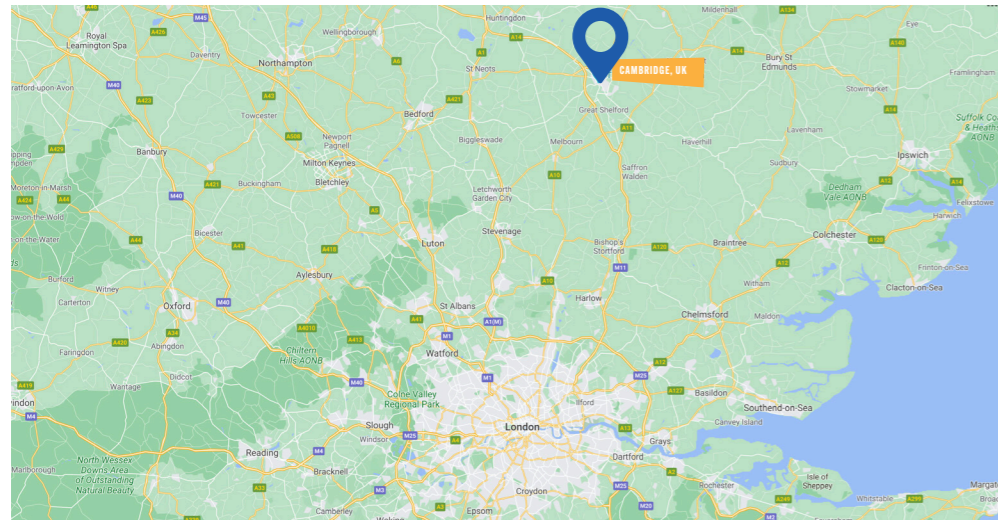


HOT LUNCH IN
SCHOOL & DINNER
WITH FAMILY

ACCOMMODATION / FACILITIES

| | | | |
|-------------------|-----|------------------------------------|-----|
| Ensuite | ✗ | Kitchen for Group Leader use | ✗ ✗ |
| Standard | ✓ | Laundry service | ✓ |
| Single | ✓ | Laundry - self-service | ✗ |
| Twin | ✓ | WiFi access | ✓ ✓ |
| Triple | ✗ | Drink making facilities | ✗ ✓ |
| Television Lounge | ✗ ✓ | Vending machines | ✗ ✗ |
| Common room | ✗ | Swimming pool | ✗ ✗ |
| Computer Room | ✓ | Coeliac / Special diets on request | ✓ |
| Towels provided | ✓ | Halal food on request | ✓ |

✓ = At School ✓ = At Homestay
 *Limited availability/on request



PUBLIC TRANSPORT INFORMATION:

- Nearest airport: Stansted 45km, Gatwick 150km, Heathrow 140km
- Nearest rail station: Cambridge 2.5km (30 minute walk)

WHAT'S INCLUDED:



TUITION

Students will take part in 15 hours of English language lessons per week. Lessons are topic based and designed to be fun, energetic and informative. They enable students to use their English in real world situations and increase their confidence.



ACTIVITIES

We offer a variety of onsite activities including sports, arts and crafts and team games. Our activities provide opportunities for students to use the English they have learnt and make international friends.



EXCURSIONS

Full and half day excursions allow students to really get to know the UK. We use major destinations such as London, Cambridge and Brighton as a classroom where students will find historic and cultural information through guided walking tours and visits to museums and other places of interest.



CERTIFICATE

Each student will have their English level tested upon arrival and will be placed in a class accordingly. Students will receive a portfolio to store their work in as well as a certificate to take home with them as a record of their course with us.



SAMPLE PROGRAMME (1 WEEK OR 2 WEEKS)

| WEEK 1 | MORNING | AFTERNOON | EVENING |
|--------|---|---|--|
| SUN | Arrival and Local Orientation | | Evening with Hosts |
| MON | Placement Test & Induction Lesson (3hrs) | Walking Tour of Cambridge City | Evening with Hosts |
| TUES | English Lessons (3 hours) | Project Work | Social Evening e.g. Welcome Party |
| WEDS | English Lessons (3 hours) | Included Half Day Excursion: e.g. Ely, Walking Tour & Ely Cathedral | Evening with Hosts |
| THUR | English Lessons (3 hours) | Project Work | Evening with Social Evening e.g. Movie Night |
| FRI | English Lessons (3 hours) | Local Visit: Kings College | Evening with Hosts |
| SAT | Included Full Day Excursion: London Walking Tour (no entrance included) | | Evening with Hosts |

| WEEK 2 | MORNING | AFTERNOON | EVENING |
|--------|---|---------------------------|---|
| SUN | Day with Hosts or Group Leader | | Evening with Hosts |
| MON | Local Visit: Fitzwilliam Museum | English Lessons (3 hours) | Evening with Hosts |
| TUES | Project Work | English Lessons (3 hours) | Social Evening e.g. British Culture Evening |
| WEDS | Included Half Day Excursion: e.g. Bury St Edmunds Walking Tour (no entrance included) | English Lessons (3 hours) | Evening with Hosts |
| THUR | Project Work | English Lessons (3 hours) | Social Evening e.g. Team Games |
| FRI | Local Visit: Punting on the River Cam | English Lessons (3 hours) | Evening with Hosts |
| SAT | Included Full Day Excursion: Oxford OR Canterbury Walking Tour (no entrance included) | | Evening with Hosts |
| SUN | Departure | | |

This is a sample programme and all elements may be subject to change. Lessons may take place in the mornings or afternoons.

Diego's Group
CHOSE

CANTERBURY
UK



ADDRESS: STAFFORD HOUSE INTERNATIONAL, 19 NEW DOVER ROAD, CANTERBURY, CT1 3AS



Learn English in the world famous Cathedral City



- COURSES:**
ENGLISH & ACTIVITIES
ENGLISH & OPTIONAL ACTIVITIES
- ACCOMMODATION:**
HOMESTAY & RESIDENTIAL



CANTERBURY, UK

OVERVIEW

Perfect for seaside seekers and history hunters, Canterbury is a bustling cathedral city originally built by the Romans. Fun to explore and easy to walk around, Canterbury is a safe and comfortable place for all. Close to the beaches of the south coast and within easy reach of London, it is a great base to discover England. The city centre is within walking distance from the school and offers an abundance of shops, restaurants and cafés ranging from high street favourites to independent stores. Classes take place at Stafford House Canterbury.

THE SCHOOL

Our Canterbury school is located just moments from the centre of the medieval city and is perfect for those looking for that classic English adventure. The school is well equipped with interactive whiteboards, a library and self-study room as well as a student lounge and courtyard. Homestay and residential accommodation are available as well as a shuttle bus to and from school each day. A hot lunch and dinner is provided Monday-Friday at our own school canteen and free wifi is available throughout the school.

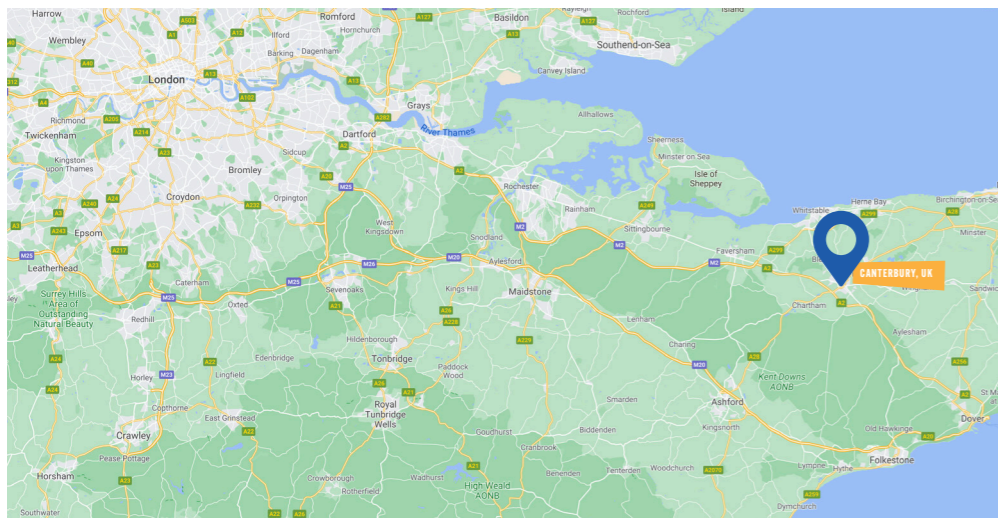
| | | | |
|--|--|---|---|
| AGES 12 yrs+ (English with activities) 16 yrs+ (English with optional activities) | GROUPS ONLY | CENTRE INFORMATION | |
| HIGHLIGHT Canterbury Cathedral | ACCOMMODATION Homestay & Residential | 15 HOURS of English lessons | 2 EVENING ACTIVITIES per week |
| | | 1 FULL DAY Excursion per week | 2 SIGHTSEEING VISITS per week |
| | | FREE BUS FROM HOMESTAY TO SCHOOL | 1 HALF DAY Excursion per week |
| | | | HOT LUNCH & DINNER IN SCHOOL ON WEEKDAYS |

ACCOMMODATION / FACILITIES

| | | | |
|-------------------|------|------------------------------------|-------|
| Ensuite | ✓✗ | Kitchen for Group Leader use | ✓***✗ |
| Standard | ✗✓ | Laundry service | ✗✓ |
| Single | ✓✓* | Laundry - self-service | ✓✗ |
| Twin | ✓✓ | WiFi access | ✓✓✓ |
| Triple | ✓✓** | Drink making facilities | ✓✗✗ |
| Television Lounge | ✗✓✓ | Vending machines | ✗✗✗ |
| Common room | ✓✓✗ | Swimming pool | ✗✗✗ |
| Computer Room | ✗✗✗ | Coeliac / Special diets on request | ✓✓✓ |
| Towels provided | ✗✓ | Halal food on request | ✓✓✗ |

✓ = At School ✓ = At Homestay ✓ = At Residential Accommodation

* Group Leaders only ** Limited availability/on request *** Not guaranteed



PUBLIC TRANSPORT INFORMATION:

- Nearest airport: Gatwick 110km, Stansted 131 km, Heathrow 145 km
- Nearest rail station: Canterbury East 1km (13 min walk), Canterbury West 1.5km (20 min walk)
- High Speed train to London only takes 1 hour
- 5-minute walk from school to city centre

WHAT'S INCLUDED:



TUITION

Students will take part in 15 hours of English language lessons per week. Lessons are topic based and designed to be fun, energetic and informative. They enable students to use their English in real world situations and increase their confidence.



ACTIVITIES

We offer a variety of onsite activities including sports, arts and crafts and team games. Our activities provide opportunities for students to use the English they have learnt and make international friends.



EXCURSIONS

Full and half day excursions allow students to really get to know the UK. We use major destinations such as London, Cambridge and Brighton as a classroom where students will find historic and cultural information through guided walking tours and visits to museums and other places of interest.



CERTIFICATE

Each student will have their English level tested upon arrival and will be placed in a class accordingly. Students will receive a portfolio to store their work in as well as a certificate to take home with them as a record of their course with us.



SAMPLE PROGRAMME (1 WEEK OR 2 WEEKS)

| WEEK 1 | MORNING | AFTERNOON | EVENING |
|--------|---|---|--|
| SUN | Arrival and Local Orientation | | Evening with Hosts |
| MON | Placement Test & Induction Lesson (3hrs) | Walking Tour of Canterbury City | Evening with Hosts |
| TUES | English Lessons (3 hours) | Project Work | Social Evening e.g. Welcome Party |
| WEDS | English Lessons (3 hours) | Included Half Day Excursion e.g. Leeds Castle | Evening with Hosts |
| THUR | English Lessons (3 hours) | Project Work | Evening with Social Evening e.g. Movie Night |
| FRI | English Lessons (3 hours) | Local Visit: Canterbury Cathedral | Evening with Hosts |
| SAT | Included Full Day Excursion: London Walking Tour (no entrance included) | | Evening with Hosts |

| WEEK 2 | MORNING | AFTERNOON | EVENING |
|--------|--|--|---|
| SUN | Day with Hosts or Group Leader | | Evening with Hosts |
| MON | English Lessons (3 hours) | Walking Tour of Canterbury City | Evening with Hosts |
| TUES | English Lessons (3 hours) | Project Work | Social Evening e.g. British Culture Evening |
| WEDS | English Lessons (3 hours) | Included Half Day Excursion e.g. Chatham Historic Dockyard | Evening with Hosts |
| THUR | English Lessons (3 hours) | Project Work | Social Evening e.g. Team Games |
| FRI | English Lessons (3 hours) | Local Visit: The Beane Museum and Shopping | Evening with Hosts |
| SAT | Included Full Day Excursion: Cambridge or Brighton Walking Tour (no entrance included) | | Evening with Hosts |
| SUN | Departure | | |

This is a sample programme and all elements may be subject to change. Lessons may take place in the mornings or afternoons.

Juni's group
CHOSE

LONDON

UK



ADDRESS: STAFFORD HOUSE INTERNATIONAL, 43-45 BLOOMSBURY SQUARE, LONDON, WC1A 2RA



Students can enjoy exploring all that London has to offer, including shopping on Oxford Street (above)



- COURSES:**
ENGLISH & ACTIVITIES
ENGLISH & OPTIONAL ACTIVITIES
- ACCOMMODATION:**
HOMESTAY



LONDON, UK

OVERVIEW

Where better to come for a study holiday than London, the vibrant and iconic capital. Bloomsbury, London's literary centre, is filled with academic collections, medical institutions, book shops and cafes, as well as the famous British Museum. Having been home to many great thinkers and writers, such as Charles Dickens, it is easy to see why Bloomsbury is so popular with tourists and locals. Elegant Georgian townhouses line the leafy squares creating a peaceful space in the centre of London. There is so much to explore in this city and our programme aims to fit as much sightseeing and learning in as possible.

THE SCHOOL

Stafford House London is in the heart of the upmarket Bloomsbury, central London close to transport links and the excitement and buzz of the capital. The school is in a historic building that is full of character and packed with the latest technology. Classrooms are bright, light and airy and provide the perfect learning environment - there are interactive whiteboards and wifi throughout. There is an onsite café and canteen and groups are able to choose from either residential or homestay accommodation.

CENTRE INFORMATION



AGES
14 years +



GROUPS ONLY



HIGHLIGHT
London



ACCOMMODATION
Homestay



15
HOURS
of English
lessons



2
EVENING
ACTIVITIES
per week



3
SIGHTSEEING
VISITS
per week



1
FULL DAY
Excursion
per week



TRAVELCARD
INCLUDED

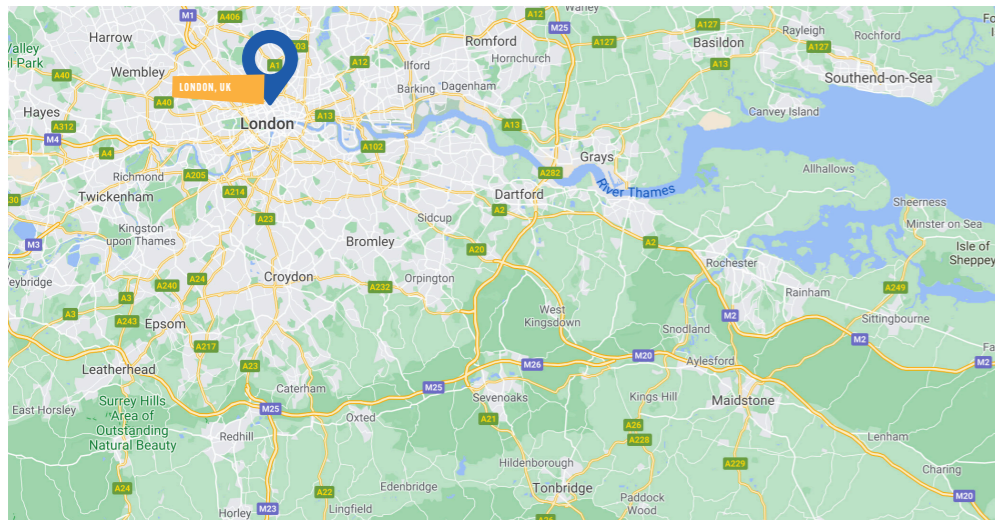


HOT LUNCH IN
SCHOOL & DINNER
WITH FAMILY OR
AT SCHOOL IF IN
RESIDENCE

ACCOMMODATION / FACILITIES

| | | | |
|-------------------|-----|------------------------------------|-------|
| Ensuite | ✓ | Kitchen for Group Leader use | ✗ ✓ |
| Standard | ✓ | Laundry service | ✗ ✓ |
| Single | ✓ | Laundry - self-service | ✗ ✗ |
| Twin | ✓ | WiFi access | ✓ ✓ |
| Triple | ✓ | Drink making facilities | ✗ ✓ |
| Television Lounge | ✓ ✓ | Vending machines | ✗ ✗ |
| Common room | ✓ ✗ | Swimming pool | ✗ ✗ |
| Computer Room | ✓ ✗ | Coeliac / Special diets on request | ✓ ✓** |
| Towels provided | ✗ ✓ | Halal food on request | ✓ ✓** |

✓ = At School ✓ = At Homestay
* Canteen at school **On request



PUBLIC TRANSPORT INFORMATION:

- Nearest airport: London City 14km, Heathrow 30km, Gatwick 47 km, Stansted 57km
- St Pancras International Station: 3km (10 mins by train)
- Nearest mainline Train Station: Kings Cross/St Pancras
- Nearest Underground Station: Holborn

WHAT'S INCLUDED:



TUITION

Students will take part in 15 hours of English language lessons per week. Lessons are topic based and designed to be fun, energetic and informative. They enable students to use their English in real world situations and increase their confidence.



ACTIVITIES

We offer a variety of onsite activities including sports, arts and crafts and team games. Our activities provide opportunities for students to use the English they have learnt and make international friends.



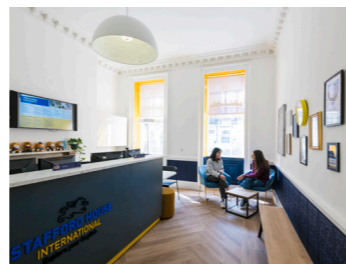
EXCURSIONS

Full and half day excursions allow students to really get to know the UK. We use major destinations such as London, Cambridge and Brighton as a classroom where students will find historic and cultural information through guided walking tours and visits to museums and other places of interest.



CERTIFICATE

Each student will have their English level tested upon arrival and will be placed in a class accordingly. Students will receive a portfolio to store their work in as well as a certificate to take home with them as a record of their course with us.



SAMPLE PROGRAMME (1 WEEK OR 2 WEEKS)

| WEEK 1 | MORNING | AFTERNOON | EVENING |
|--------|---|--|--|
| SUN | Arrival and Local Orientation | | Evening with Hosts |
| MON | Sightseeing Tour: Westminster area | Placement Test & Induction Lesson (3hrs) | Evening with Hosts |
| TUES | Free Morning with Group Leader | English Lessons (3 hours) | Social Evening e.g. Welcome Party |
| WEDS | Visit: The British Museum | English Lessons (3 hours) | Evening with Hosts |
| THUR | Free Morning with Group Leader | English Lessons (3 hours) | Evening with Social Evening e.g. Movie Night |
| FRI | Sightseeing Tour: The West End, Piccadilly Circus, Leicester Square & Covent Garden | English Lessons (3 hours) | Evening with Hosts |
| SAT | Included Full Day Excursion: Oxford Walking Tour (no entrance included) | | Evening with Hosts |

| WEEK 2 | MORNING | AFTERNOON | EVENING |
|--------|--|---------------------------|---|
| SUN | Day with Hosts or Group Leader | | Evening with Hosts |
| MON | Sightseeing Tour: Thames Walk, Tower of London & Tower Bridge (no entrance) | English Lessons (3 hours) | Evening with Hosts |
| TUES | Free Morning with Group Leader | English Lessons (3 hours) | Social Evening e.g. British Culture Evening |
| WEDS | Visit: London Science Museum | English Lessons (3 hours) | Evening with Hosts |
| THUR | Free Morning with Group Leader | English Lessons (3 hours) | Social Evening e.g. Team Games |
| FRI | Sightseeing Tour: Buckingham Palace (no entrance), Hyde Park & Shopping in Oxford Street | English Lessons (3 hours) | Evening with Hosts |
| SAT | Included Full Day Excursion: Brighton Walking Tour (no entrance included) | | Evening with Hosts |
| SUN | Departure | | |

This is a sample programme and all elements may be subject to change. Lessons may take place in the mornings or afternoons.

VIRTUAL LESSONS ALL YEAR ROUND

LEARN FROM THE COMFORT OF YOUR OWN HOME

Our Tailor-Made Virtual Programmes for Groups provide the perfect environment for students to improve their English, have fun and learn new skills. Our courses are fully flexible, and both timetables and lesson content can be specially selected to meet a group's needs. Groups can choose from a combination of lessons, project work, activities and virtual tours and visits. We also have a wide range of lesson content to choose from, ranging from our topic based general English classes to, World of Work and preparation for Cambridge or IELTS exams.



LEARN FROM THE COMFORT OF HOME

Dynamic, interactive, informative, and culturally integrated lessons will motivate students and enable them to build their confidence from the comfort and safety of their own home. Teachers will provide students with carefully selected homework tasks which will allow them to put what they have learnt into practice and take their studies out into the wider world.



PROJECT WORK AND ACTIVITIES

A Stafford House lesson doesn't end there! Imaginative projects will provide time for students to collaborate with classmates while activities will provide fun and energy to brighten their day. Our virtual programme aims to bring the spirit of Stafford House to our students wherever they are.



QUICK INFO



AGES
Young learners and adults



DATES
All year round

6

MINIMUM CLASS SIZE
Smaller groups and one-to-one classes available on request



TUITION
Hourly (60mins), Daily, Weekly (flexible to suit a group's needs and time zone)



TECHNICAL REQUIREMENT
Computer with webcam and microphone, reliable internet connection



STUDENT TEACHER RATIO
Maximum of 12:1

Our Virtual lessons are flexible and can be tailored to your groups' needs



SIX PARTS TO A PERFECT LEARNING DAY

1. LESSONS

Our online lessons are specially designed to target students' communicative competencies and maximise the benefits of the online classroom. All materials have been designed exclusively for Stafford House and breakout rooms will encourage pair and group work. For groups interested in studying towards a specific exam, preparation classes are available for Cambridge Suite, IELTS and Trinity GESE exams. For those keen to begin their professional journey our World of Work lessons provide the perfect choice.

2. PROJECT WORK

Project work is a great way for students to make their own choices about what they learn, involving different skills and promoting creativity. Project work can cater for a wide range of learning styles and personalities and allows students to develop both their research and presentation skills. Projects are usually completed in small groups and can be presented in a variety of ways including online posters, blogs, short films, and magazine or newspaper articles.

3. ACTIVITIES

A Stafford House online activity will provide the perfect end to your session with us – the words & phrases that students have learnt in class will help them to have fun, use their English & even pick up a new skill. Activities Include: blog writing, international events, test yourself challenges, talent shows and scavenger hunts.

4. VIRTUAL TOURS & VISITS

Virtual tours and visits provide a great way for students to experience new places. Virtual tours of cities and famous landmarks are available to allow students to see and research new places. Interactive virtual visits to museums such as the National History Museum boost knowledge and inspire.

5. HOMEWORK

A Stafford House lesson doesn't end with an activity - the learning keeps going. Students will be given a homework task to complete which will build on what they have learnt in class and allow them to explore the topics even further. Homework tasks may include listening to a TED talk or preparing a written or video presentation.

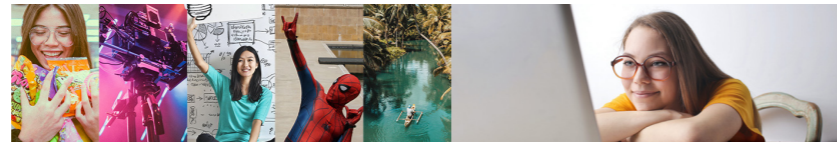
6. CERTIFICATE

Initial level test and end of course certificate included.

VIRTUAL COURSES 2023

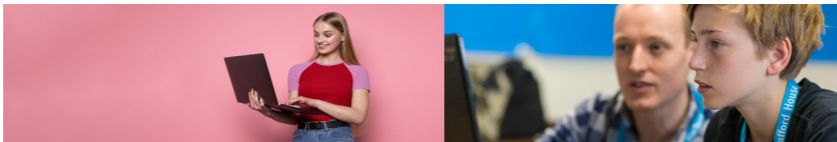
We offer a wide variety of virtual courses for students all year round.

GENERAL ENGLISH



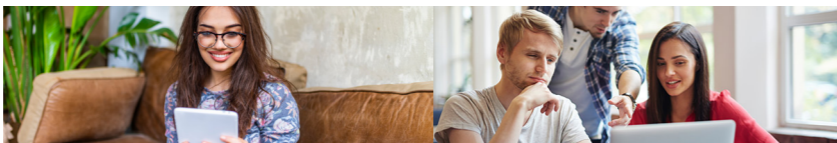
| Programme | Highlights | Age |
|--------------------------------|--|------|
| Topic-based General English | Dynamic, informative and culturally integrated lessons centred around a daily topic. There are a wide range of topics including: film and TV, sports, inventions, shopping and food. | 8-17 |
| Witches and Wizards | Explore the famous books and films. Get to know the author JK Rowling Take part in virtual tours of filming locations across the UK. Fun topics including houses, characters, book reviews, Quidditch, potions, and casting spells! | 8-17 |
| Superheroes | Explore the adventurous lives of your favourite superheroes including Spiderman, Ironman and the Hulk. Get to know their characters as well as their allies, enemies and rivals. Take part in virtual tours of some of the iconic filming locations. | 8-12 |
| Princesses | Explore the famous lives of our most loved princesses: Elsa and Anna from Frozen, Mulan and Snow White. Get to know the stories that surround the princesses and the friends and family that join them on their adventures. | 8-12 |
| British Culture and Literature | Introduction to fiction and non-fiction writing, as well as novels, poems and plays. Fun topics each day include the Harry Potter books, modern British poems, Roald Dahl characters and Shakespeare for children. | 8-12 |

ACADEMIC ENGLISH



| Programme | Highlights | Age |
|---------------------------|--|-------|
| Academic Young Leadership | Speak with impact. Take part in meetings with confidence. Deliver outstanding presentations. Explore intercultural communication and the impact of body language. Develop conflict resolution and research skills. | 13-17 |
| Academic English | Practise each of the four skills in an academic context: listening, speaking, reading and writing. Attend lecture-style presentations to work on note taking. Take part in practical sessions to use and develop research skills. Academic writing workshops on cohesive and logical texts; planning; linking ideas. | 13-17 |
| English for Science | Introduction to science concepts and vocabulary for subjects including Chemistry, Biology and Physics. Fun topics each lesson include space, nature, animals, dinosaurs, the human body, food and electricity. | 8-12 |
| English for STEM | Explore language and vocabulary for subjects including science, technology, engineering and maths. Study topics including space, diet and fitness, diseases, the tallest structures in the world. Learn how to research, write a scientific report, do experiments, and design a tower. | 13-17 |

EXAM PREPARATION



| Programme | Highlights | Age |
|--|--|-------|
| IELTS Preparation Programme | Prepare for an internationally recognised exam. Study with experienced exam preparation teachers. Overseen by experienced and trained IELTS examiners. | 13-17 |
| Preparation for IELTS Reading | Learn about the different question types that IELTS students may encounter. Learn how to pick out the important information in a text. Learn how to skim read to get a general idea of a text. Practise strategies to improve your band score. Do some practise tests to track your improvement. | 13-17 |
| Preparation for IELTS Writing | Learn how to structure your essays and writing. Learn how to give and justify opinions and express ideas. Learn how to understand a diagram, a graph or a process. Practise analysing the question so that you answer correctly. | 13-17 |
| Preparation for IELTS Speaking and Listening | Learn strategies to speak more fluently and coherently. Learn how to express and justify an opinion, and speculate on an unknown topic. Prepare for your exam by creating mind maps to help build your vocabulary. Discover the question types that might be asked in the Listening test. | 13-17 |
| Preparation for Cambridge Suite Exams | Choose from the range of Cambridge exams including Starters, Flyers, Movers, KET, PET, FCE, CAE. | 8-17 |



WHERE
WILL YOUR
ADVENTURE
TAKE YOU?

GET IN TOUCH! WE'D LOVE TO HEAR FROM YOU

Enquiries and Admissions

Stafford House Study Holidays
19 New Dover Road
Canterbury
Kent CT1 3AS

T: +44 (0)1227 787730
E: reservations@staffordhouse.com
www.studyholidays.com

Overseas offices:

Brazil
China
Japan
Korea
Latin America
Middle East
Russia & CIS
South East Asia
Taiwan
Thailand
Turkey

ST

UD

Y

W

O

FUTURE



WWW.STUDYHOLIDAYS.COM