



[www.studyholidays.com](http://www.studyholidays.com)



**YEAR ROUND GROUPS 2024**

**ADVENTURES IN ENGLISH**

• CAMBRIDGE • CANTERBURY • LONDON •



# YEAR ROUND COURSES FOR GROUPS

*Where will you choose?*



"I am delighted to present our 2024 brochure highlighting details of all our year round courses for individuals and groups! After an amazing year delivering a wide range of feature-packed courses that focus on our cornerstone values of excellent teaching, exciting activities, great facilities and a family atmosphere, we are gearing up for an even bigger year with new courses, centres and incredible 'Adventures in English' for 2024!

All you have come to expect and for which we have an excellent reputation - customer service, dedicated teachers and student satisfaction - is central to the Study Holidays approach and we continue to evolve our course offering to suit all tastes."

*Ruth Fenton, Director*

JOIN THE STAFFORD HOUSE FAMILY	4
YOUR STUDY HOLIDAY	6
YEAR ROUND COURSE OPTIONS	8
BRACKNELL	10
CAMBRIDGE	14
CANTERBURY	18
LONDON	22



Accredited by the  
BRITISH COUNCIL  
for the teaching  
of English in the UK





# JOIN THE STAFFORD HOUSE FAMILY!

Here at Stafford House Study Holidays we are all about the student experience.



## EXPERIENCE THE WORLD

We have 4 great year round locations situated across the UK for groups. At Stafford House Study Holidays there is something for everyone!

## A FUN, HOLISTIC APPROACH

Whether you choose a small town or big city location you will be fully immersed in an English-speaking environment, and be able to explore the things that you are most passionate about. Our Junior programmes provide daily English lessons as well as daily activities. Our excursions will give you the opportunity to go on historical adventures, marvel at famous landmarks and savour the excitement at incredible theme parks.

## COMFORTABLE, SAFE ENVIRONMENT

A comfortable and creative environment helps you achieve your potential, and we choose the best centres to host our summer and year round programmes. We also take our food very seriously, ensuring all students have 3 healthy meals a day, including a hot lunch (packed lunches are also provided on excursions). A healthy and well fed student is one brimming with lots of positive energy and ability to learn more productively.

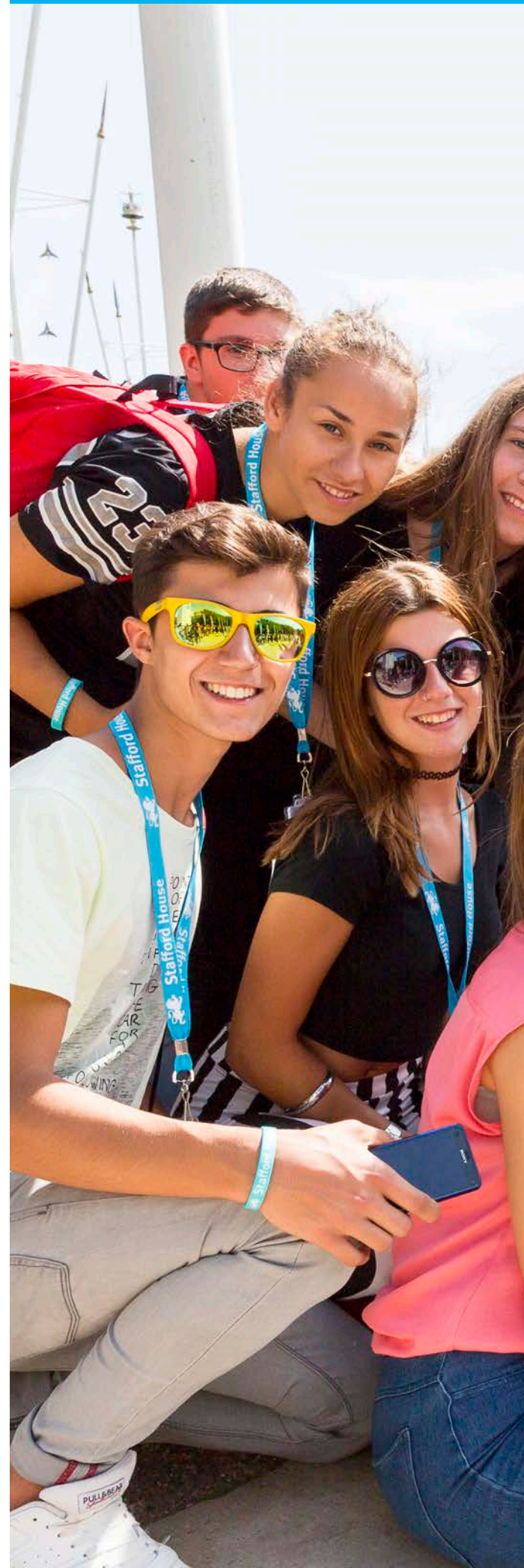
## HEALTHY LEARNING

By ensuring we incorporate plenty of sports and physical activity into your daily routine, we provide the opportunity to spend a lot of time outdoors enjoying nature, with various activities like basketball, tennis and even sailing in some of our centres! We also offer the opportunity for creative expression through our artistically inspired learning. schools we ensure that students are treated equally and with respect, and in return treat others with the same approach.

## BECOME IMMERSSED

With our social programme you can take part in dozens of exciting activities! Join in with a "Dragon's Den" style presentation, an International Party or maybe enter into one of our centre's talent shows. Each activity is a great opportunity to use your English with your classmates in a fun and relaxed environment

Make lifelong friends at Study Holidays!



# BECOME A PART OF OUR PRIDE!

Our staff create an environment of happy and healthy experiences with a dedication to delivering the safest and most positive year round junior programmes.

## PROGRESSIVE OUTLOOK

Stafford House Study Holidays is open and inclusive to everyone and in all our schools we ensure that students are treated equally and with respect, and in return treat others with the same approach.

## DANCE INTO THE EVENING

We take our dancing very seriously at Stafford House Study Holidays and as such host various discos throughout each programme. Our disco evenings are a fun way for everyone to showcase their moves on the dance floor and simply let go! Dancing offers a wonderful opportunity for students to celebrate their hard work and achievements throughout the week. Everyone from our staff to the students is expected to put on their dancing shoes and go for it!

## COMMUNITY

Our diverse nationality mix helps create an international community based on friendship and achievement. We know you will have the experience of a lifetime with the programme you choose, making Stafford House your home away from home for the summer or throughout the year!





# YOUR STUDY HOLIDAY

Our aim is to take exceptional care of each and every student that stays with us. Our centres and locations have all been selected for their safe and secure environments, and we offer high levels of supervision.



## STUDENT WELFARE

We understand that you trust us to take care of your students and we take our responsibility very seriously. For this reason, we have [rules and procedures](#) in place for all our young students to ensure their safety and well-being, which is, of course, our top priority.

We are determined to provide the best possible experience for our students. From the moment they arrive and are greeted at the arrivals hall, we are there to guide and support them every step of the way to the moment we wave them goodbye.

Our English Language courses in the UK are accredited by The British Council. We are also founder members of Young Learners English UK, a group who are dedicated to ensuring excellence in all aspects of junior courses, especially student welfare.

## SECURITY

Our schools have always been a safe haven for students and we have highly developed contingency plans in place in the unlikely event of an emergency. Our staff are fully trained in these procedures so students can always feel they are in safe hands whilst in the care of Stafford House.

## EVENING ACTIVITIES

Our activities provide the perfect opportunity for students to use the English they have learnt with their friends. Evening activities include discos, British culture night, talent shows and movie nights.

Our aim is simple: to encourage students to use the language in realistic, cultural and fun situations. Each student will go home with a portfolio of their work along with tips and suggestions for further study. We activate student's knowledge and give them the confidence they need to communicate successfully.

## TEACHING

We employ dedicated professional teachers who are supported and guided by an experienced academic management team at Head Office.

Our syllabus and course materials are designed uniquely for our students, and aim to improve students' communicative competencies by building confidence and motivation.

Our aim is simple: to encourage students to use the language in realistic, cultural and fun situations. Each student will go home with a portfolio of their work along with tips and suggestions for further study.



Each student will go home with a portfolio of their work



## A VARIETY OF GREAT EXCURSIONS & LOCAL VISITS

Our exclusive programme of excursions to historical, cultural and fun destinations is linked to motivating lessons that prepare students for visits to many of the UK's most famous cities. We use major excursion destinations such as London, Cambridge and Oxford as a "classroom" where students are exposed to a wealth of history and culture through guided walking tours, educational materials and visits to museums, colleges, cathedrals and other attractions. Our carefully planned tours enable our students to visit famous landmarks and learn about the history and culture of the city. Additional attractions and excursions can be booked in advance (at extra cost).



## PROJECT WORK

Project work is a great way for students to make their own choices about what they learn, involving different skills and promoting creativity. Project work can cater for a wide range of learning styles and personalities and allows students to develop both their research and presentation skills. Projects are usually completed in small groups and can be presented in a variety of ways including: wall displays, blogs, short films, and magazine or newspaper articles.



# YEAR ROUND COURSE OPTIONS

BRACKNELL | CANTERBURY | CAMBRIDGE | LONDON



For groups studying with us year round, we offer a wide range of choice which can be tailored to a group's specific needs. Exam preparation for both Cambridge suite and IELTS are available as well as CLIL lessons for academic subjects such as Geography or History. We not only welcome junior students but also teachers who are keen to develop both their methodology and language skills.

## ENGLISH PLUS ACTIVITIES MINI STAYS / STAGES

- AGE:** 12+ years (varies by centre)  
**DURATION:** 1 week plus  
**ENGLISH LESSONS:** 15 hours per week  
**LOCATION:** All UK centres
- 15 hours of English language lessons per week
  - Maximum class size of 16
  - 2 sports afternoons or 2 project afternoons per week (dependent on centre)
  - 2 social evenings per week
  - 1 full day and one half day excursion per week

## EXAM PREPARATION (CAMBRIDGE SUITE AND IELTS)

- DURATION:** 1 week plus  
**ENGLISH LESSONS:** 15 hours per week  
**LOCATION:** All UK centres
- 20 hours of lessons per week
  - Prepare for an internationally recognised qualification
  - PET, KET, FCE and CAE preparation offered depending on the group's age and English level
  - Academic or General IELTS available
  - Option to take the exam as part of the course depending on dates (extra cost)
  - Option to combine General English and exam preparation

## PON/POR COURSE

- DURATION:** 1 week plus  
**ENGLISH LESSONS:** 20 hours per week  
**LOCATION:** All UK centres
- 20 hours of English lessons per week
  - Opportunity to combine general English with exam preparation
  - Maximum class size 18
  - A wealth of experience in running successful PON/POR courses
  - 2 social evenings per week
  - 1 full day and one half day excursion per week

## WORLD OF WORK

- AGE:** 14+  
**DURATION:** 1-2 weeks  
**ENGLISH LESSONS:** 15 Hours per week  
**LOCATION:** All UK centres  
**MINIMUM LEVEL:** Intermediate
- This course is ideal for those wanting to find out more about the working environment
  - 15 hours of English Lessons per week plus 2 x 3 hour WOW workshops
  - Groups can chose from a combination of general English and a number of specialist subjects including travel and tourism, green economy, marketing or journalism
  - Our most popular workshops explore the job application process: CV writing and interviewing. Others focus on effective communication in the workplace and cover both presentation and written skills
  - Our WOW visits provide an ideal complement to our workshops and give a real insight into the way a company works. Previous visits have included: Metro Bank, The Apple Store and Chelsea Football Club

## CLIL

- DURATION:** 1 week plus  
**ENGLISH LESSONS:** 15 hours per week  
**LOCATION:** All UK centres
- 15 hours of English lessons and 5 hours of CLIL subject lessons per week (additional CLIL lessons available on request at an extra cost)
  - An excellent opportunity to study a subject and the English language at the same time
  - A variety of subjects available - tailored to your group's needs
  - Option to combine general English with a specific subject
  - IGCSE preparation may be available upon request
  - 2 social evenings per week
  - 1 full day and one half day excursion per week

## COURSES FOR TEACHERS

- AGE:** 18+  
**DURATION:** 1 week plus  
**ENGLISH LESSONS:** 20 Hours per week  
**LOCATION:** All UK centres
- Suitable for practising English language teachers who are keen to further develop their skills
  - Kindergarten, primary and secondary focus available
  - Modules based on lesson planning, technology, teaching productive and receptive skills and many more
  - Options to combine general English with teaching methodology
  - Opportunities to observe classes
  - 20 hours of tuition with a maximum class size of 16



'World of Work' allows students to learn more about the professional environment







We  
CHOSE

# BRACKNELL

UK LATE AUGUST - MAY



ADDRESS: NEWBOLD COLLEGE, ST MARK'S ROAD, BINFIELD, BERKSHIRE RG42 4AN



Newbold College features beautiful period buildings and extensive grounds



**COURSES:**  
ENGLISH & ACTIVITIES

**ACCOMMODATION:**  
RESIDENTIAL

## OVERVIEW

Located just 30 minutes from Heathrow airport Newbold College provides an excellent location to study and explore the UK. Bracknell is just an hour away from London with its iconic sightseeing destinations such as Buckingham Palace, Big Ben and Covent Garden.

The school is also conveniently situated for visiting other locations of interest such as Oxford, Bath and Windsor with the World's oldest and largest inhabited castle - home of British Kings and Queens for over 1000 years.

The Lexicon in Bracknell town is Berkshire's leading shopping destination with a fantastic selection of popular shops, cafés and restaurants.

## THE SCHOOL

Newbold College is a safe campus environment located in Berkshire and close to major cities such as London and Oxford. It boasts residential accommodation from late August to May in comfortable modern twin rooms for students and ensuite singles for Group Leaders.

Classrooms are bright, spacious and well-equipped with technology. There are extensive sports fields as well as a newly renovated sports hall which houses facilities for a variety of activities including 5-a-side football, badminton, volleyball and basketball.



BRACKNELL, UK



## CENTRE INFORMATION



AGES  
12 - 17



GROUPS ONLY



HIGHLIGHT  
Windsor Castle



ACCOMMODATION  
Residential



15  
HOURS  
of English  
lessons



7  
EVENING  
ACTIVITIES  
per week



1  
FULL DAY  
Excursion  
per week



BREAKFAST, LUNCH  
AND DINNER IN  
SCHOOL CANTEEN



2  
AFTERNOON  
ACTIVITIES  
per week



1  
HALF DAY  
Excursion  
per week



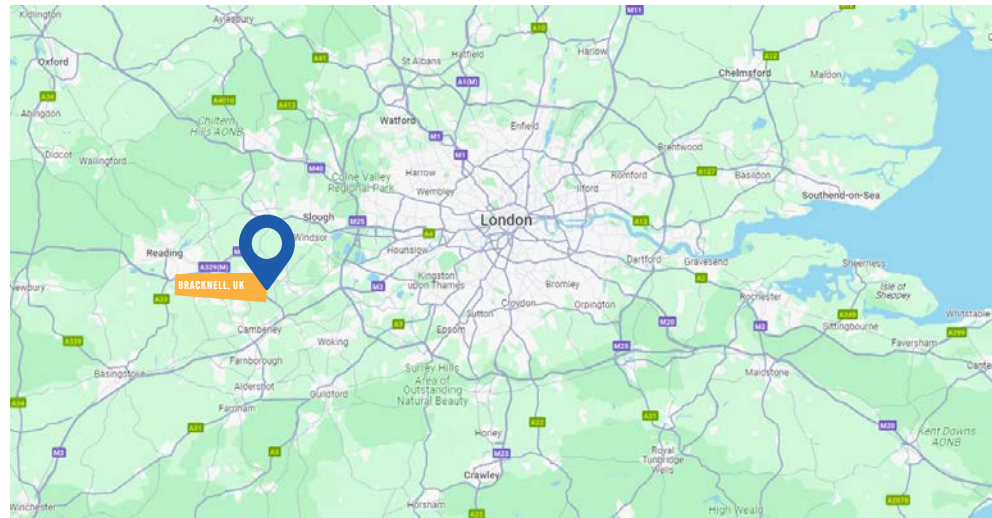
2  
AFTERNOONS  
of project  
work per  
week



## ACCOMMODATION / FACILITIES

Total capacity	70	Computer Room	✗
Bathroom ratio	1:5	Towels provided	✓
Ensuite	✓*	Kitchen for Group Leader use	✓
Standard	✗	Laundry service	✗
Single	✗	Laundry - self-service	✓
Twin	✓	WiFi access	✓
Triple	✗	Drink making facilities	✓
Television Lounge	✓	Swimming pool	✗
Common room	✓	Coeliac / Special diets on request	✓

\*Group Leader only



## PUBLIC TRANSPORT INFORMATION:

- Nearest airport: Heathrow (40km), Gatwick (73km), Stansted (132 km)
- 30 minutes by taxi from Heathrow Airport to school
- Nearest rail station: 10 minutes by taxi from Bracknell Station to school

## WHAT'S INCLUDED:



### TUITION

Students will take part in 15 hours of English language lessons per week. Lessons are topic based and designed to be fun, energetic and informative. They enable students to use their English in real world situations and increase their confidence.



### ACTIVITIES

We offer a variety of onsite activities including sports, arts and crafts and team games. Our activities provide opportunities for students to use the English they have learnt and make international friends.



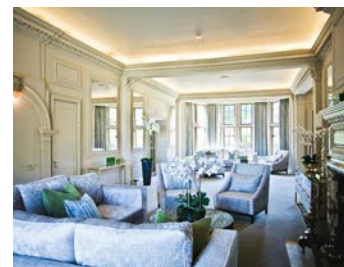
### EXCURSIONS

Full and half day excursions allow students to really get to know the UK. We use major destinations such as London, Cambridge and Brighton as a classroom where students will find historic and cultural information through guided walking tours and visits to museums and other places of interest.



### CERTIFICATE

Each student will have their English level tested upon arrival and will be placed in a class accordingly. Students will receive a portfolio to store their work in as well as a certificate to take home with them as a record of their course with us.



Students will have the chance to visit historic Windsor Castle

## SAMPLE PROGRAMME (1 WEEK)

WEEK 1	MORNING	AFTERNOON	EVENING
SUN	Arrival and Local Orientation		Welcome Evening
MON	Placement Test & Induction Lesson (3hrs)	Onsite Activities	Quiz Night
TUES	English Lessons (3 hours)	Project Work	Games Night
WEDS	English Lessons (3 hours)	Included Half Day Excursion: Windsor and Windsor Castle	Trashion Show
THUR	English Lessons (3 hours)	Project Work	British Culture Evening
FRI	English Lessons (3 hours)	Onsite Activities	Team Games
SAT	Included Full Day Excursion: London Walking Tour (no entrance included)		Movie Night
SUN	Departure Day		

This is a sample programme and all elements may be subject to change. Lessons may take place in the mornings or afternoons.

We  
**CHOSE**

# CAMBRIDGE

UK



ADDRESS: STAFFORD HOUSE INTERNATIONAL, 15 ROUND CHURCH ST, CAMBRIDGE CB5 8AD



Students can enjoy exploring the vast array of historic sights on offer in the City of Cambridge



-  **COURSES:**  
ENGLISH & ACTIVITIES  
ENGLISH & OPTIONAL ACTIVITIES
-  **ACCOMMODATION:**  
HOMESTAY

## OVERVIEW

Famous throughout the world due to its prestigious university, Cambridge attracts around 7 million tourists each year who come to see the numerous sights and monuments. There is a great deal to discover in Cambridge, from a punting boat trip on the River Cam, to a visit to one of the notable museums.

The world famous Colleges of King's and Trinity are only a short walk away from the school.

Cambridge is a safe a popular city for students of all ages.

## THE SCHOOL

Stafford House Cambridge is in the heart of Cambridge city centre. Shops are a short walk away as well as plenty of places to eat and drink. The river Cam is just around the corner along with the lovely Jesus Green for outdoor space.

The school has 9 classrooms and a large canteen with coffee bar for students to eat and relax in. Classrooms are bright with interactive white boards in each one. There is a student lounge and study area for students to socialise and practise their English.



CAMBRIDGE, UK

## CENTRE INFORMATION



**AGES**  
14 Years +



**GROUPS ONLY**



**HIGHLIGHT**  
Kings College



**ACCOMMODATION**  
Homestay



**15**  
HOURS  
of English  
lessons



**2** EVENING  
ACTIVITIES  
per week



**1** FULL DAY  
Excursion  
per week



**BUS PASS  
INCLUDED**



**2** SIGHTSEEING  
VISITS  
per week



**1** HALF DAY  
Excursion  
per week



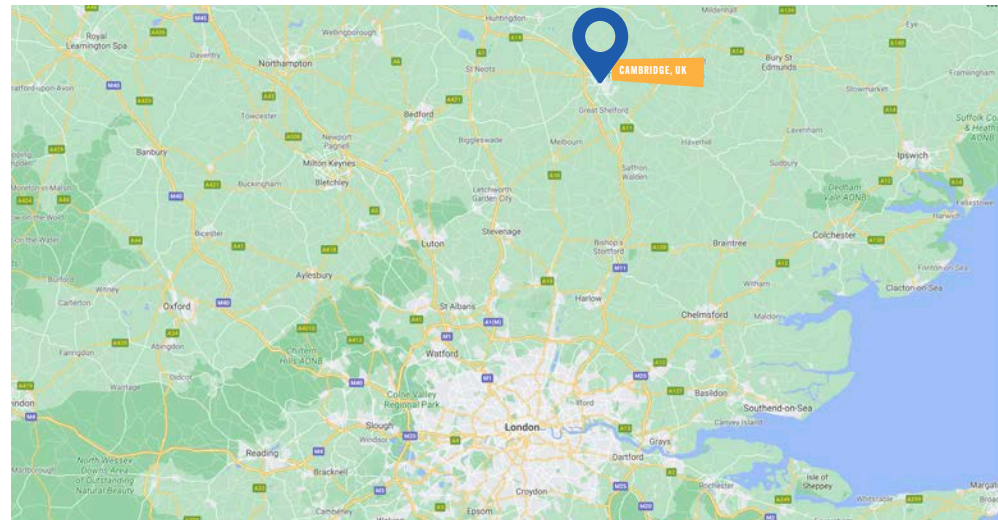
**HOT LUNCH IN  
SCHOOL & DINNER  
WITH FAMILY**



## ACCOMMODATION / FACILITIES

Ensuite	✗	Kitchen for Group Leader use	✗ ✗
Standard	✓	Laundry service	✓
Single	✓	Laundry - self-service	✗
Twin	✓	WiFi access	✓ ✓
Triple	✗	Drink making facilities	✗ ✓
Television Lounge	✗ ✓	Vending machines	✗ ✗
Common room	✗	Swimming pool	✗ ✗
Computer Room	✓	Coeliac / Special diets on request	✓
Towels provided	✓	Halal food on request	✓

✓ = At School    ✓ = At Homestay  
\*Limited availability/on request



## PUBLIC TRANSPORT INFORMATION:

- Nearest airport: Stansted 45km, Gatwick 150km, Heathrow 140km
- Nearest rail station: Cambridge 2.5km (30 minute walk)

## WHAT'S INCLUDED:



### TUITION

Students will take part in 15 hours of English language lessons per week. Lessons are topic based and designed to be fun, energetic and informative. They enable students to use their English in real world situations and increase their confidence.



### ACTIVITIES

We offer a variety of onsite activities including sports, arts and crafts and team games. Our activities provide opportunities for students to use the English they have learnt and make international friends.



### EXCURSIONS

Full and half day excursions allow students to really get to know the UK. We use major destinations such as London, Cambridge and Brighton as a classroom where students will find historic and cultural information through guided walking tours and visits to museums and other places of interest.



### CERTIFICATE

Each student will have their English level tested upon arrival and will be placed in a class accordingly. Students will receive a portfolio to store their work in as well as a certificate to take home with them as a record of their course with us.



## SAMPLE PROGRAMME (1 WEEK OR 2 WEEKS)

WEEK 1	MORNING	AFTERNOON	EVENING
SUN	Arrival and Local Orientation		Evening with Hosts
MON	Placement Test & Induction Lesson (3hrs)	Walking Tour of Cambridge City	Evening with Hosts
TUES	English Lessons (3 hours)	Project Work	Social Evening e.g. Welcome Party
WEDS	English Lessons (3 hours)	Included Half Day Excursion: e.g. Ely, Walking Tour & Ely Cathedral	Evening with Hosts
THUR	English Lessons (3 hours)	Project Work	Evening with Social Evening e.g. Movie Night
FRI	English Lessons (3 hours)	Local Visit: Kings College	Evening with Hosts
SAT	Included Full Day Excursion: London Walking Tour (no entrance included)		Evening with Hosts

WEEK 2	MORNING	AFTERNOON	EVENING
SUN	Day with Hosts or Group Leader		Evening with Hosts
MON	Local Visit: Fitzwilliam Museum	English Lessons (3 hours)	Evening with Hosts
TUES	Project Work	English Lessons (3 hours)	Social Evening e.g. British Culture Evening
WEDS	Included Half Day Excursion: e.g. Bury St Edmunds Walking Tour (no entrance included)	English Lessons (3 hours)	Evening with Hosts
THUR	Project Work	English Lessons (3 hours)	Social Evening e.g. Team Games
FRI	Local Visit: Punting on the River Cam	English Lessons (3 hours)	Evening with Hosts
SAT	Included Full Day Excursion: Oxford OR Canterbury Walking Tour (no entrance included)		Evening with Hosts
SUN	Departure		

This is a sample programme and all elements may be subject to change. Lessons may take place in the mornings or afternoons.



Diego's Group  
CHOSE

**CANTERBURY**  
UK



ADDRESS: STAFFORD HOUSE INTERNATIONAL, 19 NEW DOVER ROAD, CANTERBURY, CT1 3AS



- COURSES:**  
ENGLISH & ACTIVITIES  
ENGLISH & OPTIONAL ACTIVITIES
- ACCOMMODATION:**  
HOMESTAY & RESIDENTIAL

### OVERVIEW

Perfect for seaside seekers and history hunters, Canterbury is a bustling cathedral city originally built by the Romans. Fun to explore and easy to walk around, Canterbury is a safe and comfortable place for all. Close to the beaches of the south coast and within easy reach of London, it is a great base to discover England. The city centre is within walking distance from the school and offers an abundance of shops, restaurants and cafés ranging from high street favourites to independent stores. Classes take place at Stafford House Canterbury.

### THE SCHOOL

Our Canterbury school is located just moments from the centre of the medieval city and is perfect for those looking for that classic English adventure. The school is well equipped with interactive whiteboards, a library and self-study room as well as a student lounge and courtyard. Homestay and residential accommodation are available as well as a shuttle bus to and from school each day. A hot lunch and dinner is provided Monday-Friday at our own school canteen and free wifi is available throughout the school.



CANTERBURY, UK

<b>AGES</b> 12 yrs+ (English with activities) 16 yrs+ (English with optional activities)	<b>GROUPS ONLY</b>	<b>CENTRE INFORMATION</b>	
<b>HIGHLIGHT</b> Canterbury Cathedral	<b>ACCOMMODATION</b> Homestay & Residential	<b>15</b> HOURS of English lessons	<b>1</b> FULL DAY Excursion per week
		<b>2</b> EVENING ACTIVITIES per week	<b>2</b> SIGHTSEEING VISITS per week
		<b>FREE BUS FROM HOMESTAY TO SCHOOL</b>	<b>HOT LUNCH &amp; DINNER IN SCHOOL ON WEEKDAYS</b>

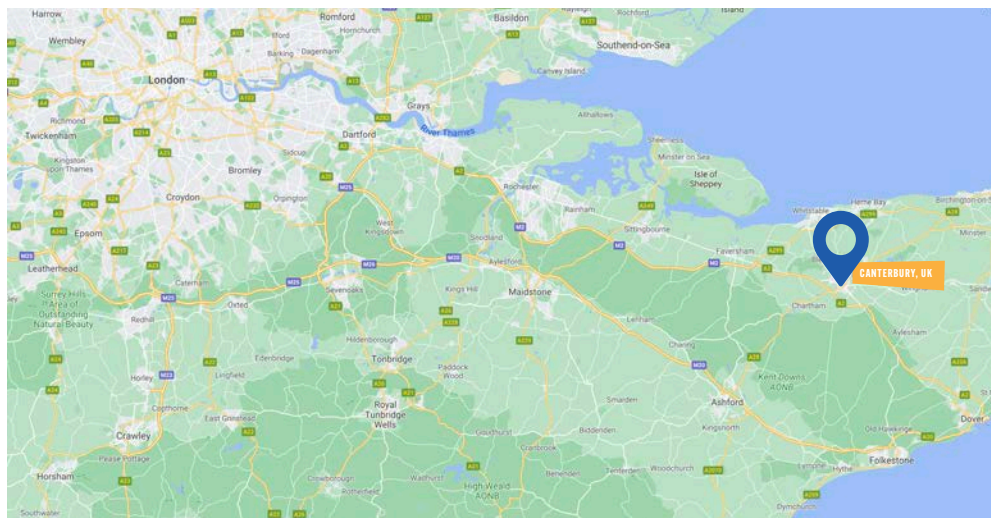


## ACCOMMODATION / FACILITIES

Ensuite	✓✗	Kitchen for Group Leader use	✓***✗
Standard	✗✓	Laundry service	✗✓
Single	✓✓*	Laundry - self-service	✓✗
Twin	✓✓	WiFi access	✓✗✓
Triple	✓✓**	Drink making facilities	✓✗✗
Television Lounge	✗✓✓	Vending machines	✗✗✗
Common room	✓✓✗	Swimming pool	✗✗✗
Computer Room	✗✗✗	Coeliac / Special diets on request	✓✓✓
Towels provided	✗✓	Halal food on request	✓✓✗

✓ = At School    ✓ = At Homestay    ✓ = At Residential Accommodation

\* Group Leaders only    \*\* Limited availability/on request    \*\*\* Not guaranteed



## PUBLIC TRANSPORT INFORMATION:

- Nearest airport: Gatwick 110km, Stansted 131 km, Heathrow 145 km
- Nearest rail station: Canterbury East 1km (13 min walk), Canterbury West 1.5km (20 min walk)
- High Speed train to London only takes 1 hour from Canterbury West Station.
- 5-minute walk from school to city centre

## WHAT'S INCLUDED:



### TUITION

Students will take part in 15 hours of English language lessons per week. Lessons are topic based and designed to be fun, energetic and informative. They enable students to use their English in real world situations and increase their confidence.



### ACTIVITIES

We offer a variety of onsite activities including sports, arts and crafts and team games. Our activities provide opportunities for students to use the English they have learnt and make international friends.



### EXCURSIONS

Full and half day excursions allow students to really get to know the UK. We use major destinations such as London, Cambridge and Brighton as a classroom where students will find historic and cultural information through guided walking tours and visits to museums and other places of interest.



### CERTIFICATE

Each student will have their English level tested upon arrival and will be placed in a class accordingly. Students will receive a portfolio to store their work in as well as a certificate to take home with them as a record of their course with us.



## SAMPLE PROGRAMME (1 WEEK OR 2 WEEKS)

WEEK 1	MORNING	AFTERNOON	EVENING
SUN	Arrival and Local Orientation		Evening with Hosts
MON	Placement Test & Induction Lesson (3hrs)	Walking Tour of Canterbury City	Evening with Hosts
TUES	English Lessons (3 hours)	Project Work	Social Evening e.g. Welcome Party
WEDS	English Lessons (3 hours)	Included Half Day Excursion e.g. Leeds Castle	Evening with Hosts
THUR	English Lessons (3 hours)	Project Work	Evening with Social Evening e.g. Movie Night
FRI	English Lessons (3 hours)	Local Visit: Canterbury Cathedral	Evening with Hosts
SAT	Included Full Day Excursion: London Walking Tour (no entrance included)		Evening with Hosts

WEEK 2	MORNING	AFTERNOON	EVENING
SUN	Day with Hosts or Group Leader		Evening with Hosts
MON	English Lessons (3 hours)	Historic River Tour	Evening with Hosts
TUES	English Lessons (3 hours)	Project Work	Social Evening e.g. British Culture Evening
WEDS	English Lessons (3 hours)	Included Half Day Excursion e.g. Chatham Historic Dockyard	Evening with Hosts
THUR	English Lessons (3 hours)	Project Work	Social Evening e.g. Team Games
FRI	English Lessons (3 hours)	Local Visit: The Beane Museum and Shopping	Evening with Hosts
SAT	Included Full Day Excursion: Cambridge or Brighton Walking Tour (no entrance included)		Evening with Hosts
SUN	Departure		

This is a sample programme and all elements may be subject to change. Lessons may take place in the mornings or afternoons.





*Jun's group*  
CHOSE

# LONDON

UK



ADDRESS: STAFFORD HOUSE INTERNATIONAL, 43-45 BLOOMSBURY SQUARE, LONDON, WC1A 2RA



Students can enjoy exploring all that London has to offer, including shopping on Oxford Street (above)



-  **COURSES:**  
ENGLISH & ACTIVITIES  
ENGLISH & OPTIONAL ACTIVITIES
-  **ACCOMMODATION:**  
HOMESTAY

## OVERVIEW

Where better to come for a study holiday than London, the vibrant and iconic capital. Bloomsbury, London's literary centre, is filled with academic collections, medical institutions, book shops and cafes, as well as the famous British Museum. Having been home to many great thinkers and writers, such as Charles Dickens, it is easy to see why Bloomsbury is so popular with tourists and locals. Elegant Georgian townhouses line the leafy squares creating a peaceful space in the centre of London. There is so much to explore in this city and our programme aims to fit as much sightseeing and learning in as possible.

## THE SCHOOL

Stafford House London is in the heart of the upmarket Bloomsbury, central London close to transport links and the excitement and buzz of the capital. The school is in a historic building that is full of character and packed with the latest technology. Classrooms are bright, light and airy and provide the perfect learning environment - there are interactive whiteboards and wifi throughout. There is an onsite café and canteen and groups are able to choose from either residential or homestay accommodation.



LONDON, UK

## CENTRE INFORMATION



AGES  
14 years +



GROUPS ONLY



HIGHLIGHT  
London



ACCOMMODATION  
Homestay



15  
HOURS  
of English  
lessons



2  
EVENING  
ACTIVITIES  
per week



3  
SIGHTSEEING  
VISITS  
per week



1  
FULL DAY  
Excursion  
per week



TRAVELCARD  
INCLUDED



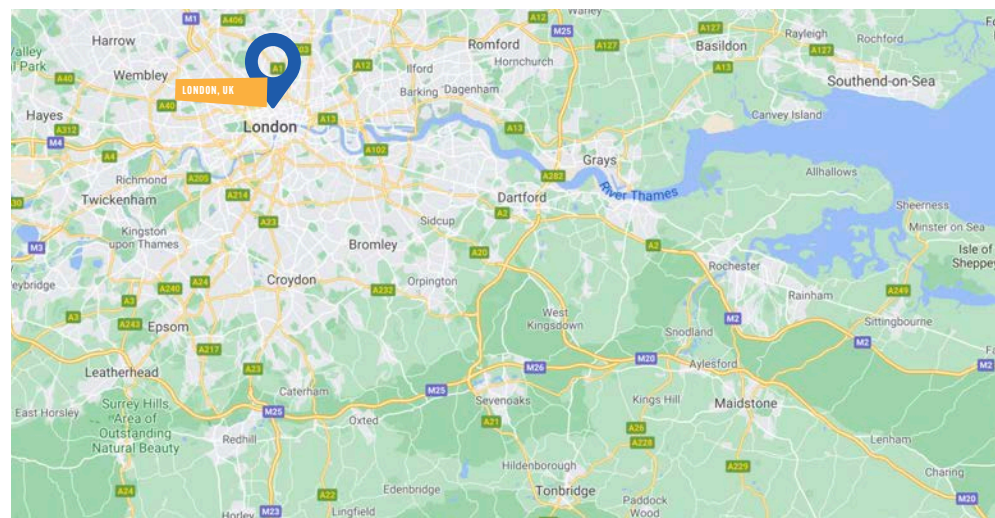
HOT LUNCH IN  
SCHOOL & DINNER  
WITH FAMILY OR  
AT SCHOOL IF IN  
RESIDENCE



## ACCOMMODATION / FACILITIES

Ensuite	✓	Kitchen for Group Leader use	✗ ✓
Standard	✓	Laundry service	✗ ✓
Single	✓	Laundry - self-service	✗ ✗
Twin	✓	WiFi access	✓ ✓
Triple	✓	Drink making facilities	✗ ✓
Television Lounge	✓ ✓	Vending machines	✗ ✗
Common room	✓ ✗	Swimming pool	✗ ✗
Computer Room	✓ ✗	Coeliac / Special diets on request	✓ ✓**
Towels provided	✗ ✓	Halal food on request	✓ ✓**

✓ = At School    ✓ = At Homestay  
\* Canteen at school    \*\*On request



## PUBLIC TRANSPORT INFORMATION:

- Nearest airport: London City 14km, Heathrow 30km, Gatwick 47 km, Stansted 57km
- St Pancras International Station: 3km (10 mins by train)
- Nearest mainline Train Station: Kings Cross/St Pancras
- Nearest Underground Station: Holborn

## WHAT'S INCLUDED:



### TUITION

Students will take part in 15 hours of English language lessons per week. Lessons are topic based and designed to be fun, energetic and informative. They enable students to use their English in real world situations and increase their confidence.



### ACTIVITIES

We offer a variety of onsite activities including sports, arts and crafts and team games. Our activities provide opportunities for students to use the English they have learnt and make international friends.



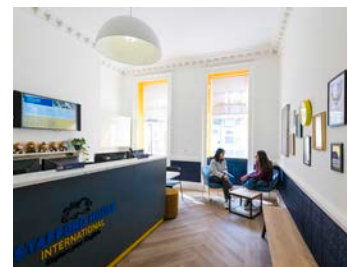
### EXCURSIONS

Full and half day excursions allow students to really get to know the UK. We use major destinations such as London, Cambridge and Brighton as a classroom where students will find historic and cultural information through guided walking tours and visits to museums and other places of interest.



### CERTIFICATE

Each student will have their English level tested upon arrival and will be placed in a class accordingly. Students will receive a portfolio to store their work in as well as a certificate to take home with them as a record of their course with us.



## SAMPLE PROGRAMME (1 WEEK OR 2 WEEKS)

WEEK 1	MORNING	AFTERNOON	EVENING
SUN	Arrival and Local Orientation		Evening with Hosts
MON	Sightseeing Tour: Westminster area	Placement Test & Induction Lesson (3hrs)	Evening with Hosts
TUES	Free Morning with Group Leader	English Lessons (3 hours)	Social Evening e.g. Welcome Party
WEDS	Visit: The British Museum	English Lessons (3 hours)	Evening with Hosts
THUR	Free Morning with Group Leader	English Lessons (3 hours)	Evening with Social Evening e.g. Movie Night
FRI	Sightseeing Tour: The West End, Piccadilly Circus, Leicester Square & Covent Garden	English Lessons (3 hours)	Evening with Hosts
SAT	Included Full Day Excursion: Oxford Walking Tour (no entrance included)		Evening with Hosts

WEEK 2	MORNING	AFTERNOON	EVENING
SUN	Day with Hosts or Group Leader		Evening with Hosts
MON	Sightseeing Tour: Thames Walk, Tower of London & Tower Bridge (no entrance)	English Lessons (3 hours)	Evening with Hosts
TUES	Free Morning with Group Leader	English Lessons (3 hours)	Social Evening e.g. British Culture Evening
WEDS	Visit: London Science Museum	English Lessons (3 hours)	Evening with Hosts
THUR	Free Morning with Group Leader	English Lessons (3 hours)	Social Evening e.g. Team Games
FRI	Sightseeing Tour: Buckingham Palace (no entrance), Hyde Park & Shopping in Oxford Street	English Lessons (3 hours)	Evening with Hosts
SAT	Included Full Day Excursion: Brighton Walking Tour (no entrance included)		Evening with Hosts
SUN	Departure		

This is a sample programme and all elements may be subject to change. Lessons may take place in the mornings or afternoons.





# EXPLORE YOUR ENGLISH

• CAMBRIDGE • CANTERBURY • LONDON •

# ADULT ENGLISH LANGUAGE COURSES

Stafford House International is a boutique group of English language schools located in London, Cambridge and Canterbury in the UK.

## STAFFORD HOUSE INTERNATIONAL

We offer English courses for general, academic and professional purposes as well as a range of English and activities options for young learners. Our mission is to educate, inspire, and help our students enjoy our cities, empowering them with confidence, to realise their personal potential.

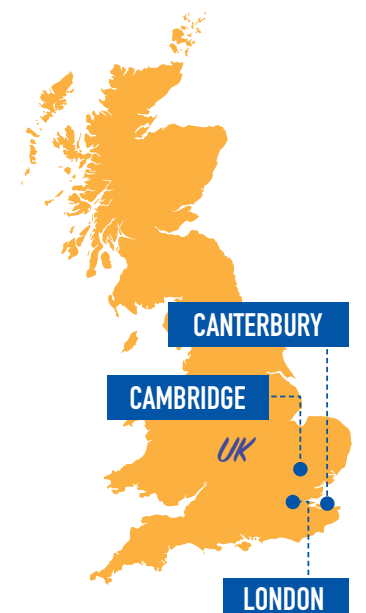
With over 65 years' experience of providing international students with effective and enjoyable English language courses and a range of professional courses including Business English, Marketing, Project Management, Business Management and Bloomberg Market Concepts, we have courses to suit all needs.

For more information visit [www.staffordhouse.com](http://www.staffordhouse.com)



## OUR COURSES

- IELTS preparation
- Cambridge ESOL
- Business English
- Professional Certificates
- One-to-One English
- CELTA teacher training
- General English



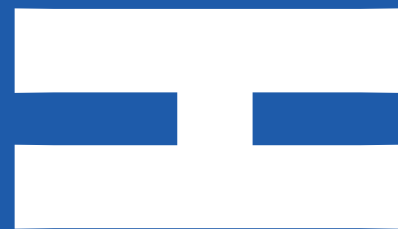


# GET IN TOUCH! WE'D LOVE TO HEAR FROM YOU

## Enquiries and Reservations

Stafford House Study Holidays  
19 New Dover Road  
Canterbury  
Kent CT1 3AS

T: +44 (0)1227 787730  
E: [reservations@staffordhouse.com](mailto:reservations@staffordhouse.com)  
[www.studyholidays.com](http://www.studyholidays.com)



# FUTURE



[WWW.STUDYHOLIDAYS.COM](http://WWW.STUDYHOLIDAYS.COM)