



ACADEMIC

Teachers receive unparalleled support and guidance, and are provided with our specially designed syllabus, as well as a wide variety of up-to-date materials. Our experienced academic management team will provide you with a thorough induction, training workshops, observations and feedback, and are on call to answer questions when you need them.

Teachers may be required to teach anything from 15 to 30 hours per week, depending on the needs of their centre at any given time. When teaching fewer hours, teachers assist more with running the activities and excursions programme, and with student welfare.

TYPICAL DAILY TASKS:

TEACHER (T)

- Deliver engaging lessons based on our tried and tested syllabus
- Motivate and manage students to ensure a fun and productive learning environment
- Contribute to school life on activities and excursions when required

SENIOR TEACHER (ST)

- Mentor newly qualified teachers on the team
- Lead by example by demonstrating excellent teaching
- Support the Director of Studies with resource management and administration

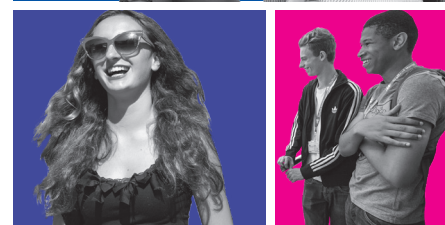
DIRECTOR OF STUDIES (DOS)

- Appropriately class students and timetable teachers
- Provide full support for the academic team ensuring the syllabus is used effectively
- Support the Centre Director in the overall management of the centre



WHY WORK WITH US?

 LOCATIONS A variety of summer school settings and campuses	 FULL BOARD Accommodation & meals included (at most centres)
 COMPETITIVE SALARIES Plus loyalty bonuses	 TRAINING Full training, inductions, observations and appraisals
 REFERENCES Supplied for all staff who have worked with us (on request)	 CAREER Opportunities and guidance for career progression
 MATERIALS In-house syllabus and teaching materials provided	 SUPPORT 24h Head Office support for staff
 EXPLORE Visit various UK locations during excursions	 MEET PEOPLE in an international multi-cultural environment



KEY INFORMATION

Stafford House Study Holidays is part of the CATS group, comprised of the following brands:



Educating **18,000** students each year

From **100** countries

Across **18** Permanent campuses

The CATS group employ **1500** permanent staff globally



Stafford House runs **19** Pop-up summer centres each year from June - August

SUMMER LOCATIONS:
UK: Brighton, Cambridge, Canterbury, Chichester, Dover, Edinburgh, London, Malvern, Oakham, Woodcote, York
USA: Boston, L.A, Yale
Canada: Calgary, Toronto

27

years providing high quality English Language and activity courses for young learners



On average **6000** students study with Stafford House each summer



Stafford House employs over **250** temporary summer staff each year



FUTURE

WEB: STAFFORDHOUSE.COM/CAREERS | EMAIL: RECRUITMENT@STAFFORDHOUSE.COM | PHONE: +44 (0) 1227 811 506



WECARE

OUR PLEDGE

To make our school communities as safe as possible we have implemented our **WeCare** pledge. This set of stringent health and safety guidelines will ensure that our students & staff can fully enjoy their experience while being confident that they are in the safest possible environment.

SAMPLE STUDENT TIMETABLE

	MORNING	AFTERNOON	EVENING
MON	ENGLISH LESSONS (3HRS)	FOOTBALL, TENNIS OR DRUMMING WORKSHOP (2.5HRS)	WELCOME EVENING & ICE BREAKER ACTIVITIES (2.5HRS)
TUE	ENGLISH LESSONS (3HRS)	INCLUDED HALF DAY EXCURSION (4.5HRS)	"WHO WANTS TO BE A MILLIONAIRE?" QUIZ NIGHT (2.5HRS)
WED	ENGLISH LESSONS (3HRS)	VOLLEYBALL, BADMINTON OR ARTS & CRAFTS (2.5HRS)	INTERNATIONAL NIGHT (2.5HRS)
THU	ENGLISH LESSONS (3HRS)	INCLUDED HALF DAY EXCURSION (4.5HRS)	CASINO NIGHT OR CONVERSATION CLUB (2.5HRS)
FRI	ENGLISH LESSONS (3HRS)	"MINI OLYMPICS" COMPETITION OR DANCE WORKSHOP (2.5HRS)	BEACH PARTY DISCO OR SPORTS (2.5HRS)
SAT	INCLUDED FULL DAY EXCURSION: LONDON, WALKING TOUR & THAMES SIGHTSEEING BOAT CRUISE (10HRS)		CHILL OUT EVENING INCLUDING FILMS, POPCORN & BOARD GAMES (2.5HRS)
SUN	ONSITE ACTIVITIES E.G. BRITISH SPORTS DAY, OR OPTIONAL FULL DAY EXCURSION E.G. OXFORD & CHRIST CHURCH COLLEGE		BRITISH CULTURE EVENING (2.5HRS)