

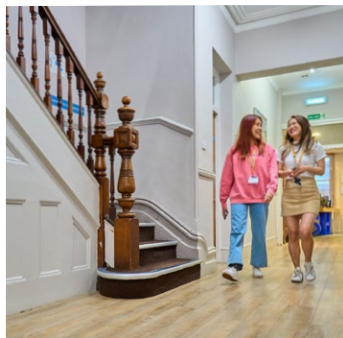


CANTERBURY WINTER CAMP



STAFFORD HOUSE CANTERBURY




Our school is a short walk from Canterbury's centre, which is full of history and vibrant with student life. The school is situated in a spacious building with modern facilities. It is a 9 minute walk to the school canteen where students will eat their meals.



QUICK INFO

 COURSE DURATION 3 weeks	 LANGUAGE LEVEL Beginner to Advanced	 DATES 4 th January 2026 - 1 st February 2026	16 STUDENTS Maximum class size
12-17 <small>YEARS OLD*</small> HOMESTAY (GROUPS)	14-17 <small>YEARS OLD*</small> HOMESTAY (INDIVIDUALS)	14-17 <small>YEARS OLD*</small> RESIDENCE (GROUPS)	16-17 <small>YEARS OLD*</small> RESIDENCE (INDIVIDUALS)

CANTERBURY WINTER CAMP

 ACTIVITIES We offer a variety of onsite evening activities, providing opportunities for students to have fun and make friends.	 EXCURSIONS Excursions allow students to get to know the UK. Students will find historic and cultural information through guided walking tours and visits to places of interest.	 HALF DAY TRIPS Our half day trips provide the perfect complement to classes and give a real world perspective to our courses. They include tours relevant to the English course.
---	--	---

*Winter Camp is available to students aged 12-17 (Groups) and 14-17 (Individuals) only. Students outside of this age range may be present within the school as part of our year round school programmes.



WINTER CAMP FEATURES

- Study in an ancient English city
- Afternoon project work in Canterbury city centre and visits to places of historic interest
- Full board accommodation. Homestay students have hot lunch and dinner in the school canteen Monday to Friday, and other meals at homestay. Residence students have all meals in canteen, except weekend breakfast. Packed meals provided for excursions
- Shuttle bus for homestay students to/from school each day
- Full day excursions to London and Cambridge
- Half day trips to Harry Potter Studios, Leeds Castle, Rochester Castle and a London musical with visit to the Hard Rock Café
- Optional excursions to Brighton and Dover Castle

THE COURSE PRICE INCLUDES

- Tuition as stated, course materials and end of course certificate
- Accommodation and all meals
- Activities and excursions as stated
- Registration fees

THE COURSE PRICE DOES NOT INCLUDE

- Transfers to and from the centre
- Unaccompanied minor check-in service
- Optional excursion fees
- Medical/travel insurance (please take out comprehensive insurance before travelling)

LOCATION

Perfect for history hunters, Canterbury is a bustling cathedral city originally built by the Romans. Fun to explore and easy to walk around, Canterbury is a safe and comfortable place for all. Close to the beaches of the south coast and within easy reach of London, it is a great base to discover England.

The city centre is within walking distance of the school and offers an abundance of shops, restaurants and cafés ranging from high street favourites to independent stores.

ACCOMMODATION

Homestay/Residence: Homestays allow students to practise their English with hosts and gain insight into Canterbury life and culture. We also offer residence accommodation, just a short walk from the school. All of our homestay hosts are carefully selected to ensure a safe and positive experience for our students. Some Canterbury homestay accommodations are provided by third-party agencies, located between a 5-minute walk and a 25-minute bus ride from the school.

SAMPLE PROGRAMME

WEEK 1	MORNING		AFTERNOON		EVENING
SUN	BREAKFAST	Arrival and Local Orientation			Free Evening
MON		Placement Test & Induction Lesson (3hrs)	LUNCH	Walking Tour of Canterbury City	Free Evening
TUES		English Lessons (3 hours)		Project Work	Challenge Night
WEDS		English Lessons (3 hours)		Half Day Trip: Leeds Castle	Big Quiz
THUR		English Lessons (3 hours)		Project Work	Bowling
FRI		English Lessons (3 hours)		Local Visit: Beaney Museum	Free Evening
SAT		Included Full Day Excursion: London Walking Tour (no entrance included)			Free Evening
SUN		Optional Full Day Excursion: Brighton Walking Tour (no entrance included)			Free Evening

WEEK 2	MORNING		AFTERNOON		EVENING	
MON	BREAKFAST	English Lessons (3 hours)	LUNCH	Local visit: Westgate Towers	DINNER	Free Evening
TUES		English Lessons (3 hours)		Project Work		Free Evening
WEDS		English Lessons (3 hours)		Musical and Hard Rock Café in London		Musical and Hard Rock Café in London
THUR		English Lessons (3 hours)		Project Work		British Culture Night
FRI		English Lessons (3 hours)		Half Day Trip: Rochester Castle & Cathedral		African Drumming
SAT		Included Full Day Excursion: Cambridge Walking Tour (no entrance included)				Free Evening
SUN		Optional Full Day Excursion: Dover Castle				

WEEK 3	MORNING		AFTERNOON		EVENING		
MON	BREAKFAST	English Lessons (3 hours)	LUNCH	Local visit: Roman Museum	DINNER	Free Evening	
TUES		English Lessons (3 hours)		Project Work		Trashion Show	
WEDS		English Lessons (3 hours)		Project Work		Free Evening	
THUR		English Lessons (3 hours)		Harry Potter Studios Tour in London		Harry Potter Studios Tour in London	
FRI		English Lessons (3 hours)		Ashford Outlet		Karaoke and Disco	
SAT		Included Full Day Excursion: River Thames cruise and London Eye visit				Free Evening	
SUN		Departure Day					

*If the London Eye is not available another venue offering panoramic views will be chosen.
This is a sample programme and all elements may be subject to change. Residence students have evening activities every weekday.
January 4th arrivals may follow week 1, week 2, week 3 from the sample timetable.
January 11th arrivals may follow week 2, week 3, week 1 from sample timetable.