



LONDON STUDENT HOUSESHARE YEAR ROUND 18+



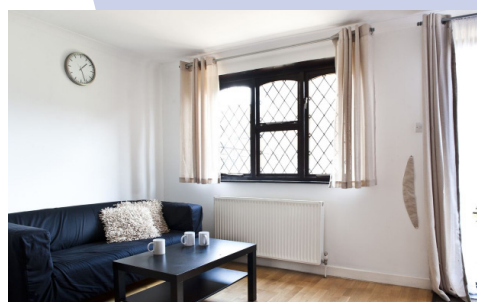
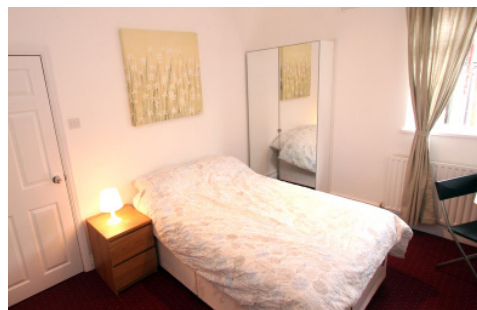
ACCOMMODATION

Our Student Houseshares are located in the Canada Water, Rotherhithe and Surrey Quays areas of London.

Houses are of different sizes, from 5 up to 7 rooms with students sharing the communal areas including the kitchen and lounge. Rooms available are single, and single ensuite*. Communal areas are fully equipped and cleaned on a weekly basis.

LOCATION

All of our Student Houseshares are located in Zone 2, in Canada Water, Rotherhithe and Surrey Quays area. They are all quiet, residential areas of London with many local amenities in the vicinity. Our Student Houses are approximately 40 minutes from the school via public transport and 20 minutes to the centre of London.



PRICING

PRICE PER WEEK
SINGLE
£260

* Please contact us for en-suite availability and pricing



QUICK INFO



ROOMS
Single



BATHROOM TYPE
Shared or en-suite



MEALS
Self Catering



BEDDING & TOWELS
Bedding - included
Towels - not included



LAUNDRY FACILITIES
Self service, washing machine



INTERNET
Free WiFi



CLEANING SERVICE
Communal areas cleaned weekly. Students responsible for bedlinen.



DISTANCE FROM SCHOOL
Approx. 40 minutes



DISTANCE FROM CENTRAL LONDON
20 minutes by tube



ON-SITE ASSISTANCE
24 hour office/reception staff onsite



OTHER FACILITIES
Student Lounge, Games Room, Museums, cafes, restaurants and shops nearby



VISITOR POLICIES
Visitors are allowed to stay with students. This will need to be arranged with the school

CHECK-IN/CHECK OUT

Check in from 2pm - student must call the student house representative 1 hour before arrival, this will ensure that a staff member is on site to provide the keys. Flight details are required two weeks pre-arrival. Check out before 10am.

