



CANTERBURY PALAMON COURT YEAR ROUND RESIDENCE 18+

ACCOMMODATION

Palamon Court is a modern student residence which opened in September 2017, offering students fully furnished rooms with private bathroom, double bed, study area with desk and chair as well as plenty of storage space. There is a spacious kitchen living area for every 5 students. The residence is ideally located just minutes from the city centre and less than 10 minutes' walk to the school. It has 24 hour security, a free gym, cinema, table tennis and pool table as well as spacious communal areas.

LOCATION

Palamon Court is just minutes from Canterbury city centre with a wealth of cafes, restaurants, shops and points of interest nearby. There is a Tesco Metro supermarket just 5 minutes' walk from the accommodation and both the Canterbury East train station and the Canterbury Bus Station are 4 minutes' walk away. Palamon Court is less than 10 minutes' walk from the school or 7 minutes by public transport.



QUICK INFO



ROOMS
Single



BATHROOM TYPE
En-suite



MEALS
Self Catering



BEDDING & TOWELS
Bedding - included
Towels - not included



LAUNDRY FACILITIES
Onsite, app controlled



INTERNET
Free WiFi



CLEANING SERVICE
Weekly



DISTANCE FROM CITY CENTRE
5 minutes walk



OTHER FACILITIES
Gym, cinema, table tennis, pool table



ON-SITE ASSISTANCE
24-hour reception and security



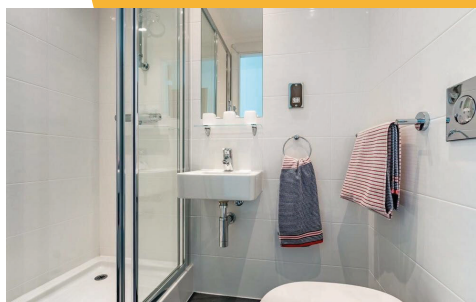
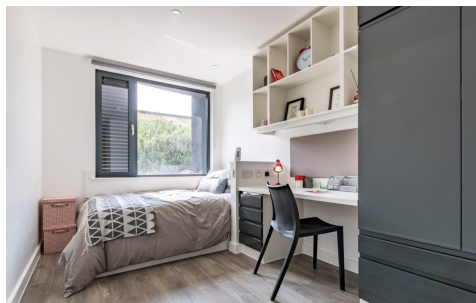
DISTANCE FROM SCHOOL
10 minute walk



VISITOR POLICIES
Must be over 18 and register at reception



CHECK-IN/CHECK OUT
Check in Sunday after 2pm, check out Saturday before 10am Flight details are required two weeks pre-arrival



PRICING

PRICE PER WEEK

SELF CATERED

£200

ADDRESS

Palamon Court, Rhodas Town,
Canterbury, CT1 2YA

