



CALGARY

HOTEL ALMA FLATS

SUMMER

RESIDENCE 18+

MAY 15TH - AUGUST 15TH 2020

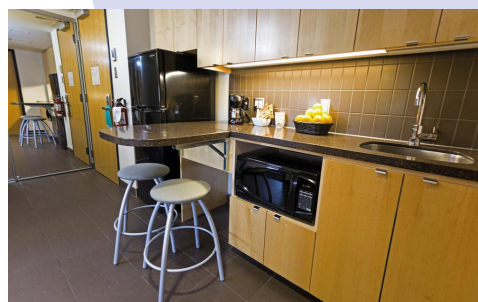
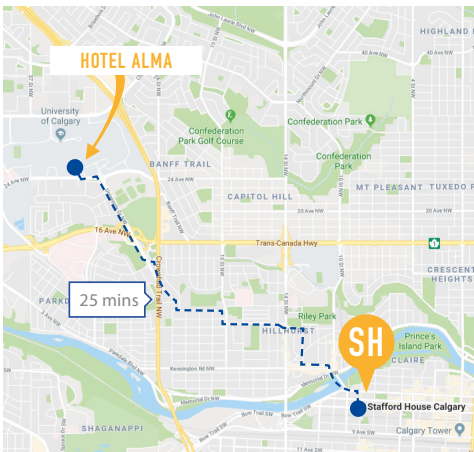


ACCOMMODATION

Our Calgary residence offers apartment style living with private rooms. Located on the campus of the University of Calgary it has 24 hour security and easy access to campus facilities. The apartments consist of two private bedrooms that each include a double bed, desk and chair, wardrobe and have Wi-Fi throughout the facility. Each apartment has a shared kitchen area, featuring a wet bar, microwave, and full-size refrigerator, and a TV lounge. Basic daily housekeeping, and weekly linen change are included; an on-site laundry facility is available 24 hours a day at cost. Recreational day passes are available at a discounted rate of \$5.00 and give access to a swimming pool, fitness centre, racquet centre, and climbing wall.

LOCATION

Ideally situated the residence benefits from all of the onsite facilities, shops, cafes, restaurants and conveniences the University of Calgary offers. The University C-Train is a 10 minute walk away (SB University CTrain Station) and from there it takes just 10 minutes to get to 8th Street SW which is a 2 minute walk from the school.



PRICING

PRICE PER WEEK
SINGLE ROOM
\$415

Security deposit of \$150 required upon arrival. Summer supplement of \$20p/w between 9th - 11th June 2020 & 3rd - 12th July 2020. Cancellation fee of \$500 within 14 days of arrival.

ADDRESS

Hotel Alma, 24th Ave NW,
Calgary, Alberta, T2N 4V5



QUICK INFO



ROOMS
Single



BATHROOM TYPE
Shared



MEALS
Self Catering



BEDDING & TOWELS
Bedding changed weekly
towels changed daily



LAUNDRY FACILITIES
Onsite, coin operated



INTERNET
Free WiFi



CLEANING SERVICE
Daily



DISTANCE FROM NEAREST STATION
5 minutes walk



OTHER FACILITIES
TV, fridge, microwave,
discounted fitness passes, chair, bookcase, dresser, closet



ON-SITE ASSISTANCE
24 hour guest service



DISTANCE FROM SCHOOL
25 minute by public transport



VISITOR POLICY
Not permitted

CHECK-IN/CHECK OUT

Check in time is 4pm and check out time is 11am. For the late check out of 6pm, a 50% charge of applicable daily contract rate applies. For check out after 6pm, one full night contract rate applies. Guaranteed access to rooms prior to 3pm may be reserved from the previous evening with one night additional contract rate charge.

