



## ACCOMMODATION

Students opting for a more family-oriented and cultural experience can choose a Homestay in Brighton. This provides an opportunity to practise English throughout the evening with host families, and helps students avoid speaking their native languages with other friends. All homestay families pass background checks and are first approved by our homestay coordinator for quality assurance. This gives students an authentic experience in a secure and relaxing atmosphere.

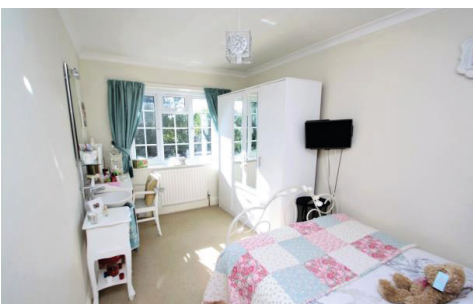
## LOCATION

Homestay accommodation options are typically between 25-50 minutes commute from the school. Brighton has good transport links throughout the city, with many bus routes and regular services. Homestay fees include a bus pass for our students' travel between their homestay and the school.

Please contact [Brighton@staffordhouse.com](mailto:Brighton@staffordhouse.com) for specific transport links from your host family location.

## PRICING

PRICE PER WEEK	
PRIVATE ROOM HALF BOARD	£190
TWIN HALF BOARD	£170
SUPERIOR HALF BOARD	£255
£20 summer supplement: 7 June - 29 August 2020	
£50 Christmas supplement: 22- 28 December 2020	



# BRIGHTON HOMESTAY YEAR ROUND 16+



## QUICK INFO



**ROOMS**  
Single, twin



**BATHROOM TYPE**  
Shared & En-suite



**MEALS**  
Half board



**BEDDING & TOWELS**  
Bedding - included  
Towels - not included



**LAUNDRY FACILITIES**  
1 wash per week



**INTERNET**  
Free WiFi



**CLEANING SERVICE**  
Bed linen washed at least once per week



**TRAVEL DISTANCE FROM SCHOOL**  
25-50 minutes by public transport



**OTHER FACILITIES**  
Varied



**ON-SITE ASSISTANCE**  
Host parents



**DISTANCE FROM SCHOOL**  
0-5 miles



**CHECK-IN/CHECK OUT**  
Students should contact their homestay to arrange arrival times. Check in Sunday after 2pm/Check out Saturday 10am



**VISITOR POLICY**  
No overnight guests without permission of host family