



# LONDON

THE STAY CLUB NORTH ACTON  
YEAR ROUND  
PREMIUM RESIDENCE 18+

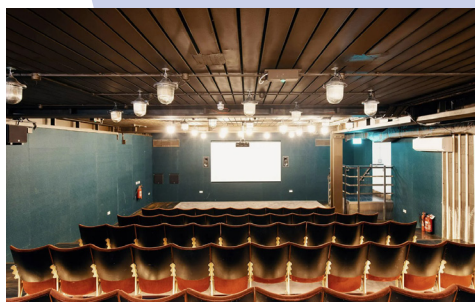
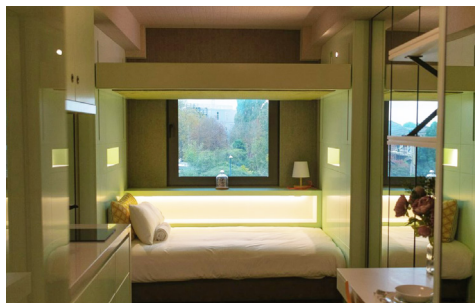
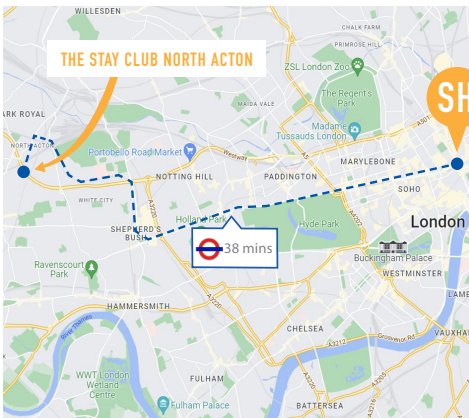


## ACCOMMODATION

The Stay Club North Acton offers brand new, high-spec, fully furnished studios in a great location. Stylishly designed throughout and with a host of great communal facilities including a free gym, large cinema room and cafe, our North Acton residence is only a 38-minute commute from the school by tube on the Central line. Each private studio is fully equipped with a double bed (and adjustable top bed), study space, kitchenette and bathroom, and plenty of storage. All linen and towels, kitchen utensils, and WiFi are supplied at no extra cost.

## LOCATION

North Acton is a cultural hub in North West London. There is a wide selection of bars, restaurants, and cafes in the area for students to choose from. With parks, cinemas, gyms and other activities on the doorstep, students will have a wealth of options in their free time. With the introduction of the new Elizabeth Line in November 2022 students can be in the heart of London in as little as 20 minutes.



## PRICING

| PRICE PER WEEK |              |
|----------------|--------------|
| SINGLE STUDIO  | TWIN STUDIO* |
| £420           | £280         |

## ADDRESS

The Stay Club North Acton,  
200 Western Ave,  
London, W3 6FW

\*only available for two people travelling together



## QUICK INFO



**ROOMS**  
Single or twin studios\*



**BATHROOM TYPE**  
En-suite



**MEALS**  
Self-Catering



**BEDDING & TOWELS**  
Bedding - one set included  
Towels - one set included



**LAUNDRY FACILITIES**  
Onsite



**INTERNET**  
Free WiFi



**CLEANING SERVICE**  
Communal rooms cleaned fortnightly



**DISTANCE FROM SCHOOL**  
38 minutes door to door by tube



**DISTANCE FROM CENTRAL LONDON**  
30 minutes by tube to Oxford Circus



**ON-SITE ASSISTANCE**  
24 hour reception staff onsite



**OTHER FACILITIES**  
Café, library, bike storage, gym, cinema, DJ Bar.



**VISITOR POLICIES**  
Day time visitors to leave by 10 pm. Overnight visitors permitted 6 days in one month.



**CHECK-IN/CHECK OUT**  
Check-in from 3pm. Check-out before 10am on day of departure. Flight details are required two weeks pre-arrival.

