



# CANTERBURY LANFRANC HOUSE SUMMER RESIDENCE 18+ 2ND – 29TH JULY 2023

## ACCOMMODATION

Lanfranc is a University residence for students aged 18+ organised into blocks of seven single bedrooms, sharing a kitchen. There is a grass quadrant in the centre and the residence enjoys a close proximity to Canterbury’s famous Cathedral. Lanfranc has a nice community feel and is a short walk from the city centre and many cafes, restaurants and shops. Bedrooms include study desk, chair, bedside table, wardrobe and shelving.

## LOCATION

Lanfranc is just minutes from Canterbury city centre with a wealth of cafes, restaurants, shops and points of interest nearby. There is a large Sainsbury’s supermarket just 5 minutes’ walk from the accommodation and Kingsmead gym and leisure centre is less than 10 minutes’ walk. Lanfranc is less than 15 minutes’ walk from the school or 11 minutes’ by public transport using the ‘Breeze 8’ bus from St. Thomas’ School bus stop.



## QUICK INFO



**ROOMS**  
Single



**BATHROOM TYPE**  
En-suite  
(wetrooms)



**MEALS**  
Self Catering



**BEDDING & TOWELS**  
Bedding - included  
Towels - not included



**LAUNDRY FACILITIES**  
Onsite, coin operated



**INTERNET**  
Free WiFi



**CLEANING SERVICE**  
Weekly. Bedding changed weekly.



**DISTANCE FROM CITY CENTRE**  
5 minutes walk



**OTHER FACILITIES**  
Communal green in centre with picnic tables and benches



**ON-SITE ASSISTANCE**  
24 -hour security



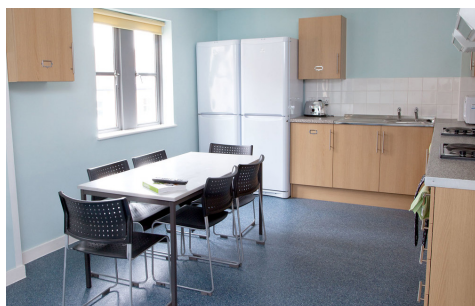
**DISTANCE FROM SCHOOL**  
15 minute walk



**VISITOR POLICIES**  
No overnight guests allowed



**CHECK-IN/CHECK OUT**  
Check in Sunday after 2pm, check out Saturday before 10am Flight details are required two weeks pre-arrival



**PRICE PER WEEK**

**PRIVATE ROOM, EN-SUITE 18+**

£230



## ADDRESS

Lanfranc House, Northgate,  
Canterbury CT1 1BJ