



BRIGHTON SUPERIOR STUDENT HOUSE 18+

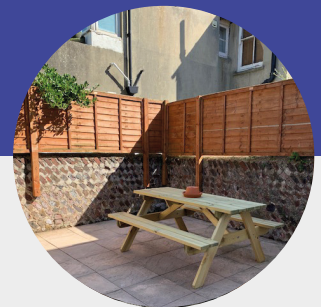
ACCOMMODATION

Our student house in Brighton is located in a lively and safe area in Hove with a good range of shops, cafes and restaurants nearby and the seaside only 15 minutes' walk away. The student house is very close to local transport routes, and the journey to the school is only 15 minutes by bus. The accommodation is comprised of 4 single rooms with a shared bathroom and 1 room with an ensuite bathroom.

LOCATION

The student house is 15 minutes by bus to the school and only 2 minutes' walk to the nearest supermarket. A park, gym and other amenities are all within walking distance.

From the house it is a 4 minute walk to the bus stop where students can take buses 2, 46 or 49 to the school.



QUICK INFO



ROOMS
Single



BATHROOM TYPE
Shared & En-suite



MEALS
Self Catering



BEDDING & TOWELS
Bedding - included
Towels - not included



LAUNDRY FACILITIES
Free onsite



INTERNET
Free WiFi



CLEANING SERVICE
Common areas
cleaned weekly



DISTANCE FROM CITY CENTRE
20 minutes by public
transport



OTHER FACILITIES
Kitchen facilities,
common area, dining
table, garden and TV



ON-SITE ASSISTANCE
Not available



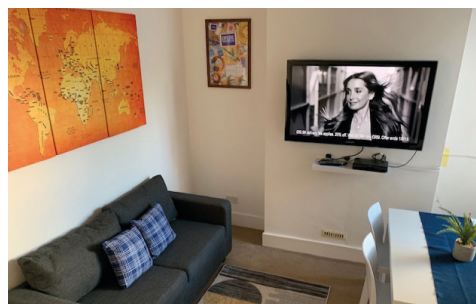
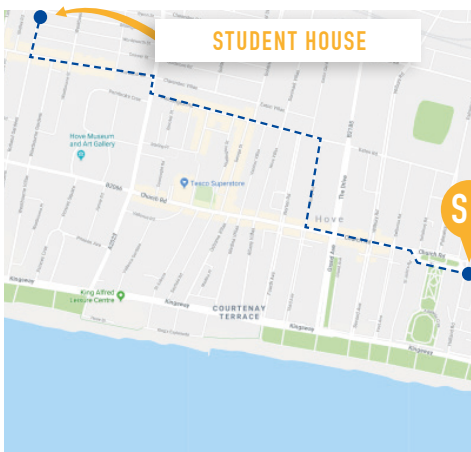
DISTANCE FROM SCHOOL
15 minute by public
transport



CHECK-IN/CHECK OUT
Check in Sunday after 2pm,
check out Saturday before
10am Flight details are
required two weeks
pre-arrival



VISITOR POLICY
No overnight visitors



PRICING

PRICE PER WEEK	
PRIVATE ROOM	PRIVATE ROOM, ENSUITE
£230	£250
+ £40 compulsory Bedding Pack	

ADDRESS

31 Rutland Road
Hove, BN3 5FF

