

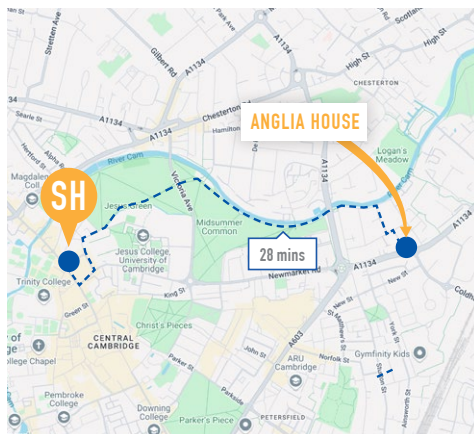


## ACCOMMODATION

Refurbished to a high level, this premium residence offers spacious rooms, in small clusters, with modern facilities. All rooms have en-suite bathrooms, a wardrobe, a study area with desk and chair and excellent noise-reducing windows. Each cluster has a shared kitchen for preparing meals and access to common areas. Enjoy a real university accommodation experience in our residence this summer!

## LOCATION

The residence is a beautiful 28-minute walk from the school. This will take you through two famous Cambridge parks, Midsummer Common and Jesus Green, as you approach the school walking along the river Cam. In Jesus Green, you will see tennis courts, an outdoor swimming pool, BBQ area and even concerts on Sunday afternoons. The residence is close to Tesco and Asda supermarkets and many other local shops around the Grafton Centre. The school is 16 minutes travel by bus, although this may vary depending on which bus route you choose.



## PRICING

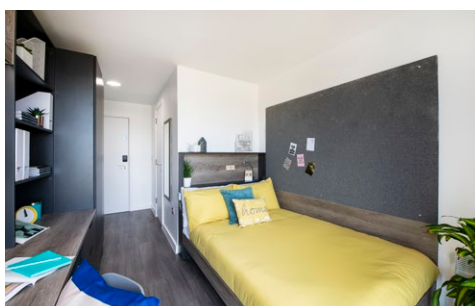
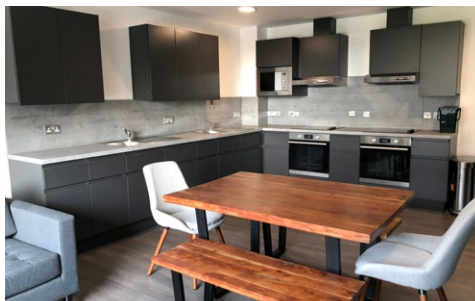
PRICE PER WEEK

PRIVATE ROOM, EN-SUITE

Please check our price list

## ADDRESS

Anglia House  
217 Newmarket Road  
Cambridge  
CB5 8AY



# CAMBRIDGE ANGLIA HOUSE RESIDENCE 18+

29TH JUNE - 9TH AUGUST



## QUICK INFO



ROOMS  
Single



BATHROOM TYPE  
En-suite



MEALS  
Self Catering



BEDDING & TOWELS  
Bedding - included  
Towels - not included



LAUNDRY FACILITIES  
Pay by app



INTERNET  
Free WiFi



CLEANING SERVICE  
Room and communal  
area once per week



DISTANCE  
FROM CITY CENTRE  
16 minutes by bus



DISTANCE FROM  
SCHOOL  
28 minute walk



ON-SITE  
ASSISTANCE  
24/7 staff available  
on site



OTHER FACILITIES  
Bicycle storage, CCTV,  
24-hour security,  
student common room  
and study space.



VISITOR POLICIES  
Guests permitted before  
11pm. No overnight  
guests allowed.



CHECK-IN/CHECK OUT  
Check in Sunday after 2pm, check out  
Saturday before 10am. Flight details  
are required two weeks pre-arrival.

