



ACCOMMODATION

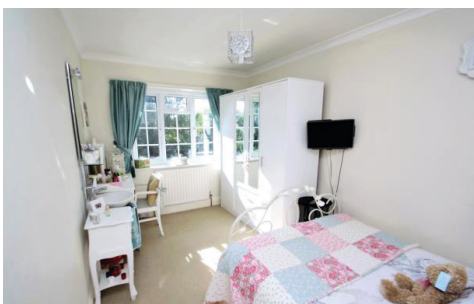
Practise your English and learn about immerse yourself in British life! Students opting for a more family-orientated and cultural experience can choose a Homestay in Canterbury. This provides an opportunity for a student to practise their English throughout the evenings with their British homestays and will help them to avoid speaking their native languages with other students.

LOCATION

All homestays pass background checks and are first approved by our homestay coordinator for quality assurance. They are located between a 5 minute walk and a 25 minute bus ride from the school. Please contact Canterbury@staffordhouse.com for specific transport links from your host family location. We offer a free school taxi service for students who live in Hersden, Sturry and Thanington which runs Monday – Friday. If students wish to join activities a taxi home will be provided after the activity. If a student attends a school excursion held on a weekend, a free service to and from the school will also be provided.

PRICING

PRICE PER WEEK	
SINGLE ROOM HALF BOARD	£175
TWIN ROOM HALF BOARD	£155
SINGLE ROOM B&B	£155
TWIN ROOM B&B	£135
£20 p/w summer supplement: 7 June - 29 August 2020	
£50 Christmas supplement: 22- 28 December 2020	



CANTERBURY HOMESTAY YEAR ROUND 16+



QUICK INFO



ROOMS
Single, twin



BATHROOM TYPE
Shared



MEALS
Half board and B&B



BEDDING & TOWELS
Provided on arrival



LAUNDRY FACILITIES
1 wash per week



INTERNET
Free WiFi



CLEANING SERVICE
Bed linen washed at least once per week



TRAVEL DISTANCE FROM SCHOOL
Between 5 minutes walk or 25 minutes by public transport or free school taxi service



OTHER FACILITIES
Varied



ON-SITE ASSISTANCE
Host parents



DISTANCE FROM SCHOOL
0-5 miles



CHECK-IN/CHECK OUT
Students should contact their homestay to arrange arrival times. Check in Sunday after 2pm/Check out Saturday 10am



VISITOR POLICY
No overnight guests without permission of host family

Please note: The above images are examples of homestay accommodation and should be used as a reference only.