



LONDON HOMESTAY YEAR ROUND 16+

ACCOMMODATION

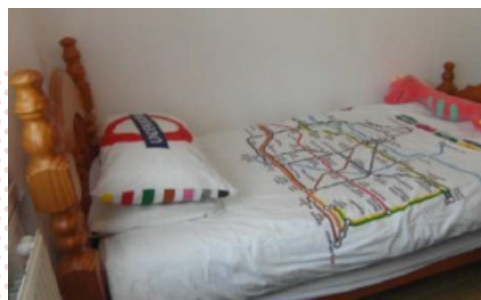
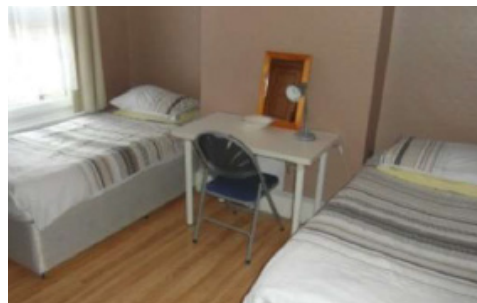
Students wanting a more authentic and cultural experience can choose to stay in Homestay accommodation while studying in London. Homestays allow for students to practise their English with their hosts outside of school, providing them with an insight into London life and culture. All of our hosts are carefully selected to ensure that our students have a safe and positive experience.

LOCATION

Our homestays are located in Zones 3 & 4 and students can expect to travel for 35 - 55 minutes by public transport. A supplement is available for homestay placement in zone 2, however please note that this does not guarantee that travel time to school will be shorter. Our homestays are located within 10-15 minutes of the nearest station.

PRICING

| PRICE PER WEEK | |
|--|------|
| SINGLE ROOM HALF BOARD | £210 |
| TWIN ROOM HALF BOARD | £195 |
| SINGLE ROOM B&B OR SELF CATERING | £190 |
| TWIN ROOM B&B OR SELF CATERING | £175 |
| SUPERIOR HOMESTAY (PRIVATE BATHROOM) FULL BOARD - ZONE 3&4 | £255 |
| SUPERIOR HOMESTAY (PRIVATE BATHROOM) B&B OR SELF CATERING - ZONE 3&4 | £235 |
| £20 summer supplement: 12 June - 27 August 2022 | |
| £50 Christmas supplement: 25 - 31 December 2022 | |
| Special Diet Supplement - £25 per week | |
| Zone 2 Supplement - £30 per week | |



QUICK INFO



ROOMS
Single, Twin



BATHROOM TYPE
Shared or Private
(private will be at an additional cost)



MEALS
Half Board, Bed & Breakfast and Self Catering



BEDDING & TOWELS
Bedding - included
Towels - not included



LAUNDRY FACILITIES
Yes - students to arrange appropriate times with the host.



INTERNET
Free WiFi



CLEANING SERVICE
Students are expected to keep their rooms and communal rooms clean and tidy.



DISTANCE FROM SCHOOL
Approx. 35-55 minutes



DISTANCE FROM CENTRAL LONDON
30-40 minutes by tube



ON-SITE ASSISTANCE
Host parents



OTHER FACILITIES
Varied



VISITOR POLICIES
No overnight guests without permission of host family.



CHECK-IN/CHECK OUT
The student should contact the host regarding arrival time, this will ensure that someone is at home to welcome them.

