



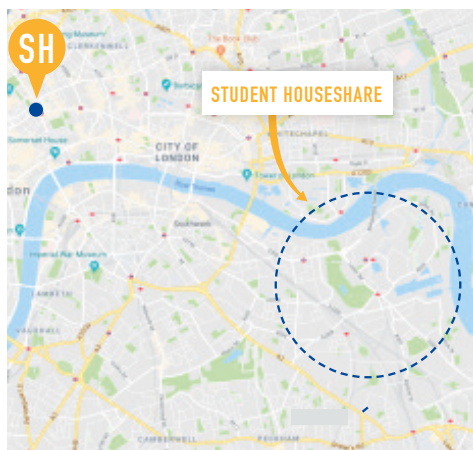
## ACCOMMODATION

Our Student Houseshares are located in the Canada Water, Rotherhithe and Surrey Quays areas of London.

Houses are of different sizes, from 5 up to 7 rooms with students sharing the communal areas including the kitchen and lounge. Rooms available are single, single ensuite, twin and twin ensuite. Communal areas are fully equipped and cleaned on a weekly basis.

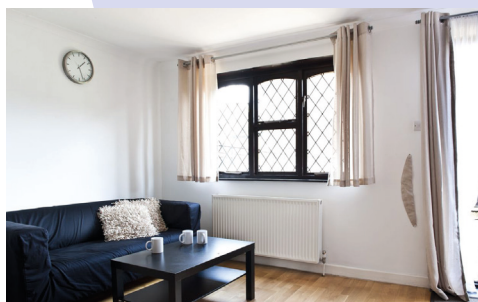
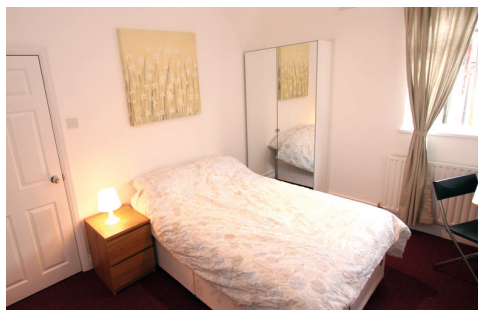
## LOCATION

All of our Student Houseshares are located in Zone 2, in Canada Water, Rotherhithe and Surrey Quays area. They are all quiet, residential areas of London with many local amenities in the vicinity. Our Student Houses are approximately 40 minutes from the school via public transport and 20 minutes to the centre of London.



## PRICING

PRICE PER WEEK	
SINGLE	TWIN
£220	£200



# LONDON STUDENT HOUSESHARE YEAR ROUND 18+



## QUICK INFO



**ROOMS**  
Single, Twin and En-suite



**MEALS**  
Self Catering



**LAUNDRY FACILITIES**  
Self service, washing machine



**CLEANING SERVICE**  
Communal areas cleaned weekly. Students responsible for bedlinen.



**DISTANCE FROM CENTRAL LONDON**  
20 minutes by tube



**OTHER FACILITIES**  
Student Lounge, Games Room. Museums, cafes, restaurants and shops nearby



**BATHROOM TYPE**  
Shared or Private



**BEDDING & TOWELS**  
Bedding - included  
Towels - not included



**INTERNET**  
Free WiFi



**DISTANCE FROM SCHOOL**  
Approx. 40 minutes



**ON-SITE ASSISTANCE**  
24 hour office/reception staff on site



**VISITOR POLICIES**  
Visitors are allowed to stay with students. This will need to be arranged with the school

### CHECK-IN/CHECK OUT

Check in from 2pm - student must call the student house representative 1 hour before arrival, this will ensure that a staff member is on site to provide the keys. Flight details are required two weeks pre-arrival. Check out before 10am.

