



LONDON

DINWIDDY HOUSE

SUMMER

RESIDENCE - ZONE 1

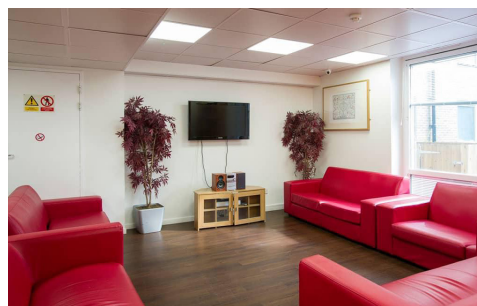
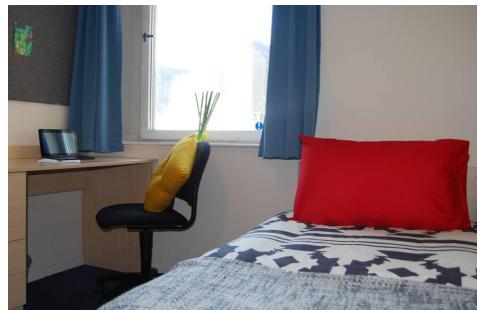
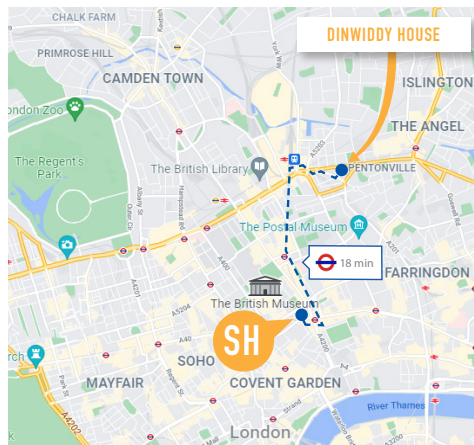
25TH JUNE - 13TH AUGUST 2023

ACCOMMODATION

Our Dinwiddy House residence offers single en-suite rooms in a great zone 1 location. Bedrooms are grouped together in flats, with each flat consisting of six or seven bedrooms with shared kitchen and dining facilities, set around a landscaped courtyard. All rooms feature a bed, study area with desk and chair, plenty of storage and an en-suite bathroom. The building is safe and secure with electronic entry, CCTV and 24 hour staff cover. Other features include a common room with a pool table, table football and a large screen TV, an on-site laundry and bike storage facilities.

LOCATION

Dinwiddy House is conveniently located in zone 1, just a short walk from King's Cross-St. Pancras International station, making travel around London easy. The local area has a large supermarket, as well as many restaurants, a VUE cinema and an o2 Academy. With the train and underground station just a few minutes' walk away from the residence, travelling to the school is straightforward, taking 18 minutes via the Piccadilly line that goes straight through to Holborn station.



PRICING

PRICE PER WEEK
SINGLE EN-SUITE
£325

ADDRESS

189-205 Pentonville Road,
Kings Cross, London, N1 9NF



QUICK INFO



ROOMS
Single



BATHROOM TYPE
En-suite



MEALS
Individuals: Self-Catering
Groups: School Canteen



BEDDING & TOWELS
Bedding - included
Towels - included



LAUNDRY FACILITIES
On-site, card operated



INTERNET
Free WiFi



CLEANING SERVICE
Communal rooms & bedrooms cleaned weekly



DISTANCE FROM SCHOOL
18 minutes door to door by tube



DISTANCE FROM CENTRAL LONDON
15 minutes by tube to Oxford Circus



ON-SITE ASSISTANCE
24 hour reception staff onsite



OTHER FACILITIES
Common room, bicycle storage



VISITOR POLICIES
No visitors permitted



CHECK-IN/CHECK OUT
Check-in from 3pm. Check-out before 10am on day of departure. Flight tickets are required two weeks pre-arrival.

