

## ACCOMMODATION

Station Court is a secure, modern, purpose-built student residence, recently refurbished to a high specification. The accommodation is made up of single en-suite bedrooms arranged in clusters of 6. Each cluster shares a fully fitted and newly renovated kitchen. Bedrooms have private bathroom and are furnished with a study desk, drawers and a chair. Station Court features a range of communal facilities and social spaces for quiet study and for hanging out with friends.

## LOCATION

Station Court is in the North London area of Tottenham, with supermarkets, cafes and shops nearby, and less than five minutes' walk from Seven Sisters London Underground station. From here, the Victoria Line takes you to the centre of London in under 15 minutes. This part of London is home to Tottenham Hotspur Football Club, and is close to the wide open spaces of the Lee Valley. Nearby Tottenham Hale station also connects you to London Stansted Airport in under an hour, ideal for holidays and trips back home.

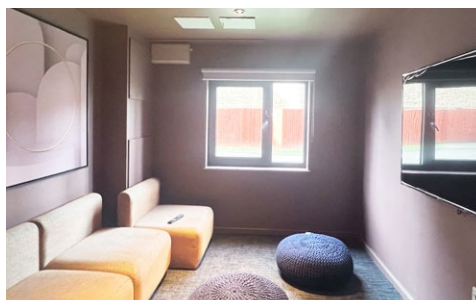
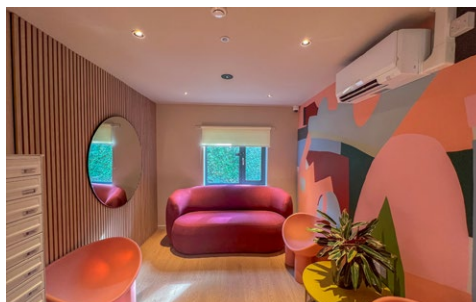


## PRICING

PRICE PER WEEK
PRIVATE ROOM, EN-SUITE
Please see our price lists
£25 summer supplement: 29 June - 02 August 2025

## ADDRESS

158 High Road,  
London, N15 4NU



# LONDON

## STATION COURT TOTTENHAM

# YEAR ROUND

## STANDARD RESIDENCE 18+



## QUICK INFO



**ROOMS**  
Single



**BATHROOM TYPE**  
En-suite



**MEALS**  
Self-Catering



**BEDDING & TOWELS**  
Bedding - included  
Towels - not included



**LAUNDRY FACILITIES**  
Onsite



**INTERNET**  
Free WiFi



**CLEANING SERVICE**  
Communal kitchens  
cleaned weekly



**DISTANCE FROM SCHOOL**  
32 minutes by tube to  
Holborn Station



**DISTANCE FROM CENTRAL LONDON**  
15 minutes by tube to  
Oxford Circus



**ON-SITE ASSISTANCE**  
24-hour reception staff  
onsite



**DISTANCE FROM OTHER LOCATIONS**  
1 hour to Heathrow Airport  
35 minutes to Victoria  
Coach Station  
22 minutes to Saint  
Pancras (Eurostar)



**OTHER FACILITIES**  
Social spaces, study  
rooms, cinema  
room, coffee shops,  
restaurants and  
supermarkets nearby.



**CHECK-IN/CHECK OUT**  
Check-in from 3pm. Check-out before  
10am on day of departure. Flight details  
are required two weeks pre-arrival.

